

**CME CAST**



# **Diagnosing AD Early with SDM and Culturally Sensitive Care**

*This activity is supported by an educational grant from Lilly*

**This activity may include discussions of products or devices that are not currently labeled for use by the FDA.**

**The faculty have been informed of their responsibility to disclose to the audience if they will be discussing off-label or investigational uses (any uses not approved by the FDA) of products or devices.**



**Anna D. Burke, MD**

Karsten Solheim Chair for Dementia  
Director of Alzheimer's and Memory Disorders Division  
Director of Neuropsychiatry  
Professor of Neurology  
Department of Neurology  
Barrow Neurological Institute  
Phoenix, AZ



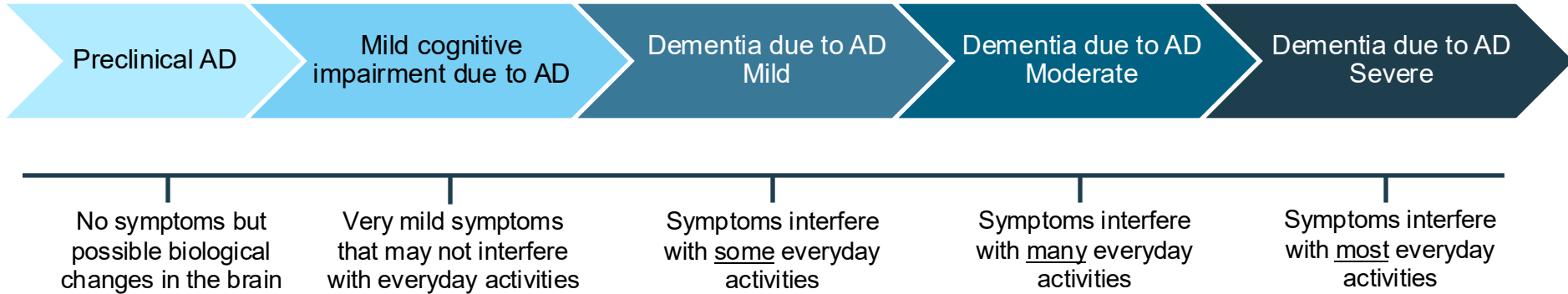
**Nathaniel Chin, MD**

Associate Professor, University of Wisconsin Department of Medicine,  
Geriatric Division  
Medical Director & Clinical Core Co-Leader, Wisconsin Alzheimer's  
Disease Research Center (ADRC)  
Medical Director,  
Wisconsin Registry for Alzheimer's Prevention (WRAP) Study  
Associate Director, Geriatric Memory Program, University of Wisconsin  
Hospitals and Clinics  
Madison, WI

# Learning Objectives

1. Utilize current and emerging diagnostic tools in diverse populations for detection of Alzheimer's disease (AD) early in the disease course
2. Integrate culturally sensitive patient and caregiver education strategies to improve shared decision-making (SDM) on brain health and/or AD management with patients
3. Implement multidisciplinary team (MDT) care when managing patients with AD

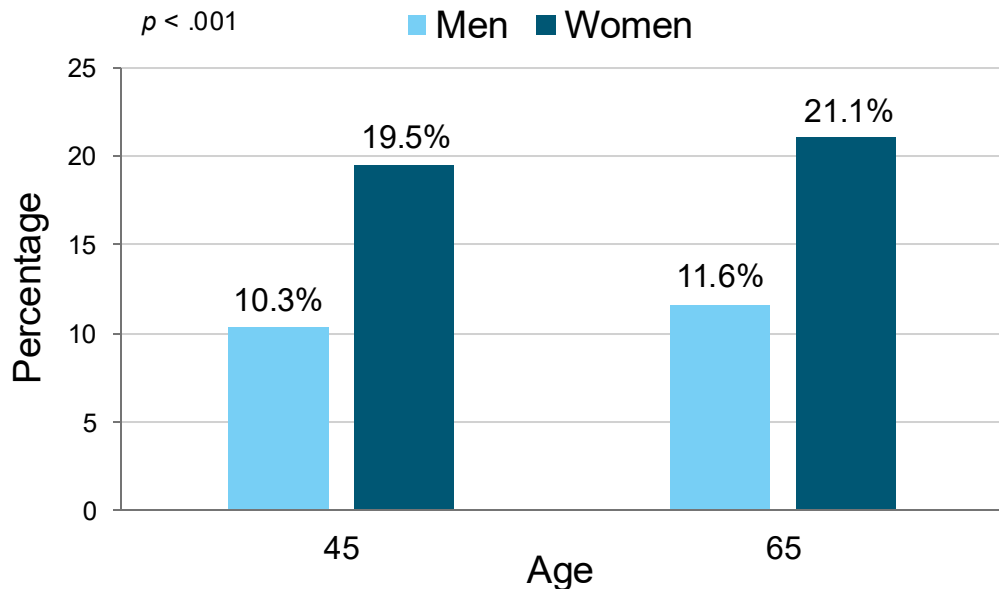
# Continuum of Alzheimer's Disease



# Impact of AD on Different Communities

## Estimated Lifetime Risk for AD, by Sex, at Age 45 and 65

### Gender-Specific Risk of Dementia and AD



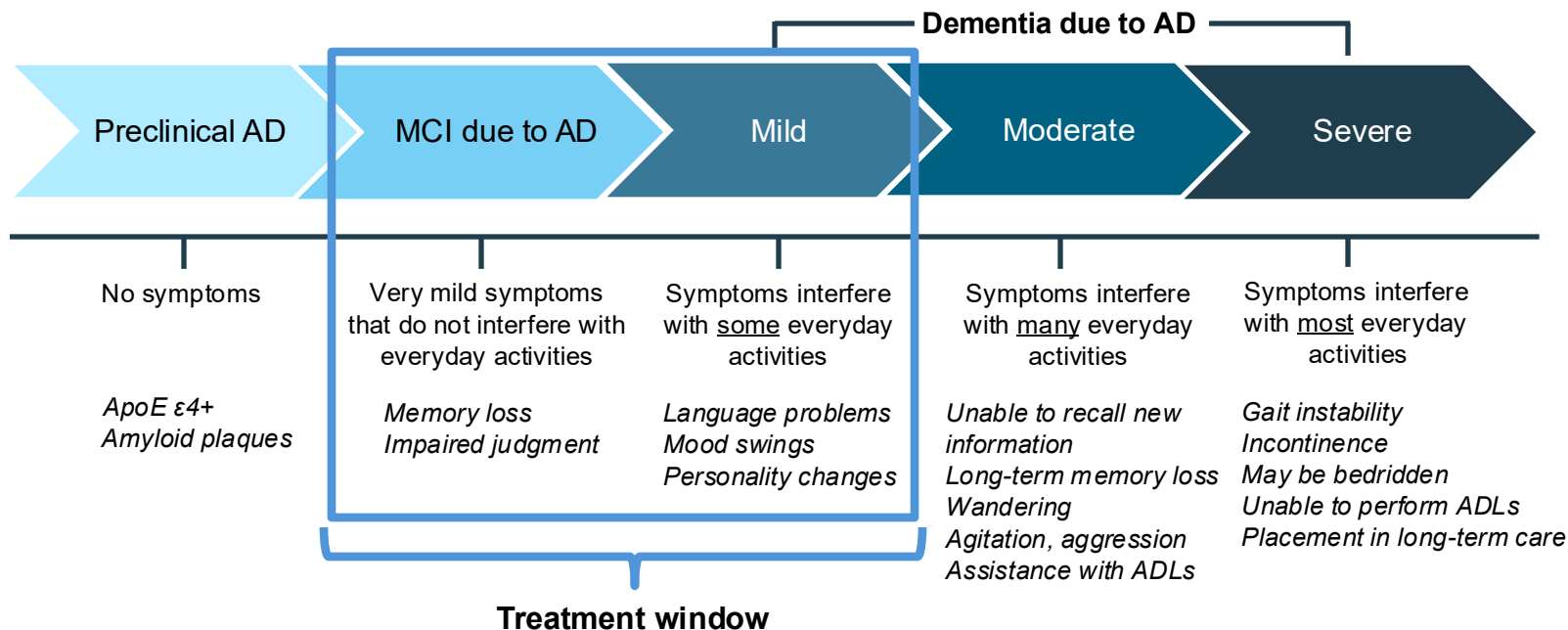
- Incidence of AD is almost **2x** higher in older **African American** individuals
- Risk of AD in **Hispanic/Latino** individuals is **1.5x** greater
- **AIAN** individuals are at higher risk of AD compared with White or Asian American populations
  - Approximately **one third** of AIAN elders will develop AD and related dementias

AIAN = American Indian, Alaska Native

Lim AC, et al. *Commun Med (Lond)*. 2023;3(1):101. Alzheimer's disease facts and figures. *Alzheimers Dement*. 2024;20(5):3708-3821.

Chene G, et al. *Alzheimers Dement*. 2015;11(3):310-320. Matthews KA, et al. *Alzheimers Dement*. 2019;15(1):17-24.

# Symptoms and Stages of AD



ADLs = activities of daily living; ApoE ε4 = apolipoprotein E

Adapted from 2024 Alzheimer's disease facts and figures. *Alzheimers Dement.* 2024;20(5):3708-3821.

# Cognitive Screening Instruments: Not a Substitute for Complete Diagnostic Workup Evaluation

Screening Tool	Approximate Time to Administer and Details
Mini-Mental State Examination (MMSE)	10 minutes Widely used and reliable tool for detecting dementia
Mini-Cog	3–5 minutes Widely used and reports have been positive
Montreal Cognitive Assessment (MoCA)	10 minutes Relatively simple Brief test that helps health professionals quickly determine if a person has declining cognitive function
Saint Louis University Mental Status (SLUMS) Exam	7 minutes 1-item Alzheimer's screening test that is especially good at identifying people with milder cognitive problems that don't yet rise to the level of dementia
General Practitioner Assessment of Cognition (GPCOG)	4 minutes to administer the patient assessment 2 minutes to interview the caregiver
AD8 Informant Interview (not a test)	3 minutes to complete

Reiss AB, et al. *AIMS Public Health*. 2022;9(4):661-689. Myrberg K, et al. *Clin Linguist Phonet*. 2019;34:652-670. Mini-cog. Dementia Care Website. 2021. <https://dementiacare.com.my/abc-of-dementia/quick-screening-test-for-dementia/>. Montreal Cognitive Assessment (MoCA) test. 2024. <https://mocatest.com>. SLU Website. 2024. <https://www.slu.edu/medicine/internal-medicine/geriatric-medicine/aging-successfully/assessment-tools/mental-status-exam.php>. General Practitioner Assessment of Cognition Website. 2016. <http://gpcog.com.au/>. Galvin J and Zweig Y. Hartford Institute for Geriatric Nursing (HIGN) Website. 2021. <https://hign.org/consultgeri/try-this-series/ad8-washington-university-dementia-screening-test>.



## Cross-Cultural Applicability

- Montreal Cognitive Assessment (MoCA)
  - Widely used to screen for mild cognitive impairment (MCI)
- While there are many available versions, the cross-cultural validity of the assessment has not been explored sufficiently

## Clinical Discussion

- Highlights the necessity for cross-cultural considerations
- Recognize it as a screening tool and not a diagnostic tool
- Suggest making appropriate cutoffs and point adjustments for education

<b>MONTREAL COGNITIVE ASSESSMENT (MCA)</b> Version 7.1 Original Version				<b>NAME :</b> <b>Education :</b>	<b>Date of birth :</b> <b>Sex :</b>	<b>Date of birth :</b> <b>DATE :</b>																	
<b>VISUOSPATIAL / EXECUTIVE</b>		<div style="display: flex; align-items: center;"> <div style="margin-left: 10px;">           Copy cube         </div> </div>		<div style="display: flex; align-items: center;"> <div style="margin-left: 10px;">           Draw <b>CLOCK</b> (Ten past eleven) (3 points)         </div> </div>		<b>POINTS</b>  <div style="display: flex; justify-content: space-around;"> <span>[ ]</span> <span>[ ]</span> <span>[ ]</span> </div> <div style="text-align: right;"> <b>/5</b> </div>																	
<b>NAMING</b>		<div style="display: flex; justify-content: space-around;"> </div>		<div style="display: flex; justify-content: space-around;"> <span>[ ]</span> <span>[ ]</span> <span>[ ]</span> </div> <div style="text-align: right;"> <b>/3</b> </div>																			
<b>MEMORY</b>		<div style="display: flex; align-items: center;"> <div style="flex: 1;">           Read list of words, subject must repeat them. Do 2 trials, even if 1st trial is successful. Do a recall after 5 minutes.         </div> <table border="1" style="border-collapse: collapse; text-align: center;"> <tr> <td></td> <td>FACE</td> <td>VELVET</td> <td>CHURCH</td> <td>DAISY</td> <td>RED</td> </tr> <tr> <td>1st trial</td> <td></td> <td></td> <td></td> <td></td> <td></td> </tr> <tr> <td>2nd trial</td> <td></td> <td></td> <td></td> <td></td> <td></td> </tr> </table> </div>			FACE	VELVET	CHURCH	DAISY	RED	1st trial						2nd trial						<div style="text-align: right;"> <b>No points</b> </div>	
	FACE	VELVET	CHURCH	DAISY	RED																		
1st trial																							
2nd trial																							
<b>ATTENTION</b>		<div style="display: flex; align-items: center;"> <div style="flex: 1;">           Read list of digits (1 digit/sec.).             Read list of letters. The subject must tap with his hand at each letter A. No points if ≥ 2 errors.             Serial 7 subtraction starting at 100         </div> <div style="flex: 2;">           Subject has to repeat them in the forward order [ ] 2 1 8 5 4            Subject has to repeat them in the backward order [ ] 7 4 2         </div> </div>		<div style="text-align: right;"> <b>/2</b> </div>																			
<b>LANGUAGE</b>		<div style="display: flex; align-items: center;"> <div style="flex: 1;">           Repeat : I only know that John is the one to help today. [ ]            The cat always hid under the couch when dogs were in the room. [ ]         </div> <div style="flex: 2;">           Fluency / Name maximum number of words in one minute that begin with the letter F [ ] _____ (N ≥ 11 words)         </div> </div>		<div style="text-align: right;"> <b>/2</b> <b>/1</b> </div>																			
<b>ABSTRACTION</b>		<div style="display: flex; align-items: center;"> <div style="flex: 1;">           Similarity between e.g. banana - orange = fruit         </div> <div style="flex: 2;">           [ ] train - bicycle [ ] watch - ruler         </div> </div>		<div style="text-align: right;"> <b>/2</b> </div>																			
<b>DELAYED RECALL</b>		<div style="display: flex; align-items: center;"> <div style="flex: 1;">           Has to recall words <b>WITH NO GUE</b> </div> <table border="1" style="border-collapse: collapse; text-align: center;"> <tr> <td>FACE</td> <td>VELVET</td> <td>CHURCH</td> <td>DAISY</td> <td>RED</td> </tr> <tr> <td>[ ]</td> <td>[ ]</td> <td>[ ]</td> <td>[ ]</td> <td>[ ]</td> </tr> </table> </div>		FACE	VELVET	CHURCH	DAISY	RED	[ ]	[ ]	[ ]	[ ]	[ ]	<div style="text-align: right;"> <b>Points for UNGUICED recall only</b>   <b>/5</b> </div>									
FACE	VELVET	CHURCH	DAISY	RED																			
[ ]	[ ]	[ ]	[ ]	[ ]																			
<b>Optional</b>		<div style="display: flex; align-items: center;"> <div style="flex: 1;">           Category cue Multiple choice cue         </div> <table border="1" style="border-collapse: collapse; text-align: center;"> <tr> <td></td> <td></td> <td></td> <td></td> </tr> </table> </div>																					
<b>ORIENTATION</b>		<div style="display: flex; align-items: center;"> <div style="flex: 1;">           [ ] Date [ ] Month [ ] Year [ ] Day [ ] Place [ ] City         </div> </div>		<div style="text-align: right;"> <b>/6</b> </div>																			

© Z.Nasreddine MD  
 Administered by:

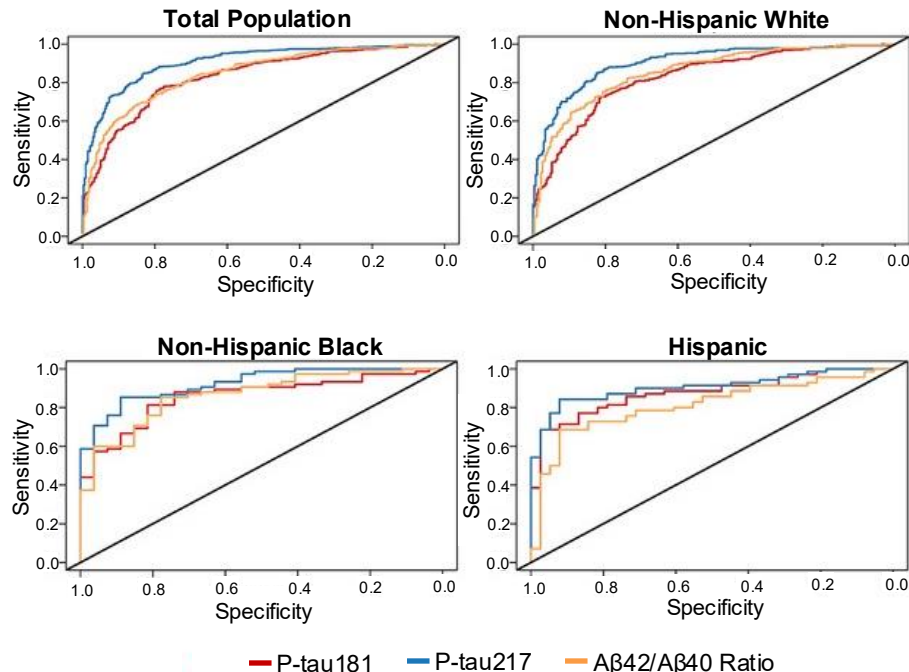
[www.mocatest.org](http://www.mocatest.org)

Normal ≥ 26 / 30  
 TOTAL

/30

A total of 1 point if < 13 on any subtest

# Bio-Hermes Study: Predictive Power of Biomarkers in Diverse Populations



## Results

- Blood-based biomarkers (BBBs) predict brain amyloid positivity in a community-based population in all groups
- **Demographic and biomarker differences associated with ethnicity and race may influence screen failure rates**

## Clinical Discussion

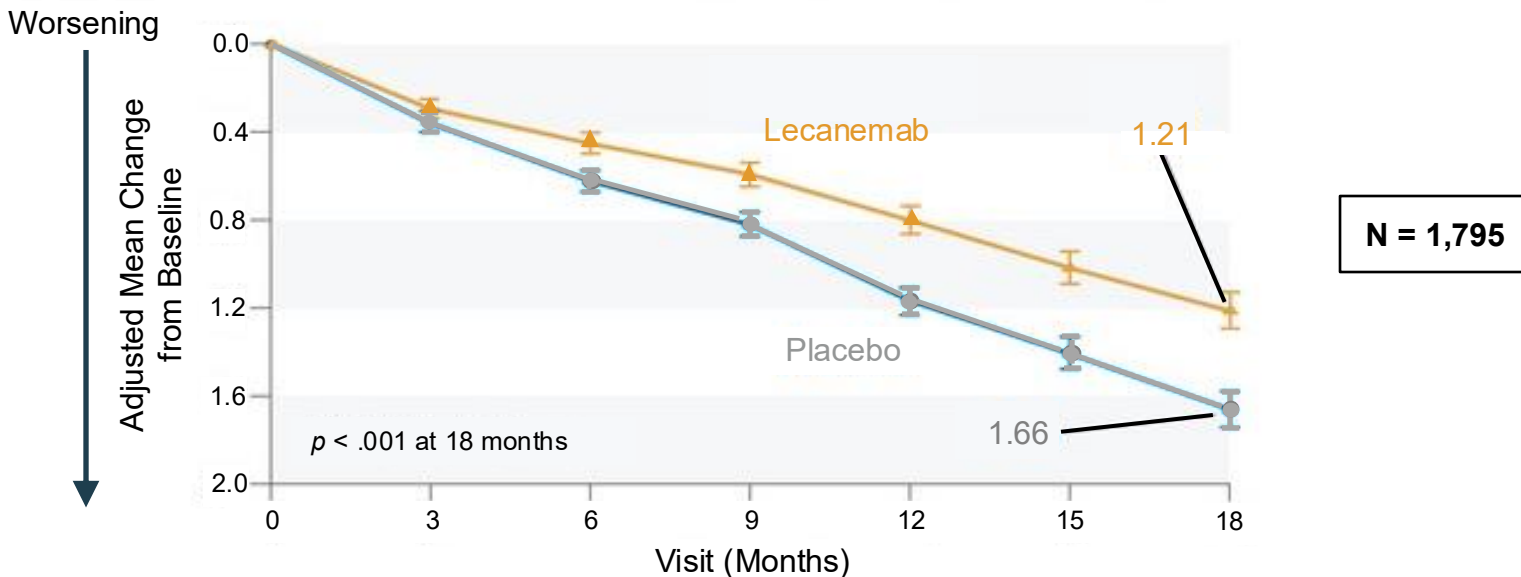
- BBBs are very good for identifying persons with amyloid plaques in the brain with or without symptoms of disease and for persons of all racial and ethnic backgrounds
- **May help identify patients who may benefit from treatment**
- **Room to develop other technologies based on differences**

Receiver operating characteristic curve used for prediction of brain positron emission tomography or cerebrospinal fluid amyloid positivity adjusted for age and ApoE ε4 status with imputed values  
Aβ = amyloid beta; p-tau = phosphorylated tau  
Mohs RC, et al. *Alzheimers Dement.* 2024;20(4):2752-2765.

# CLARITY AD: Impact of Lecanemab

## Change in CDR-SB Score (Range, 0-18)

Difference in least-squares mean change, -0.45 (95% CI, -0.67 to -0.23)

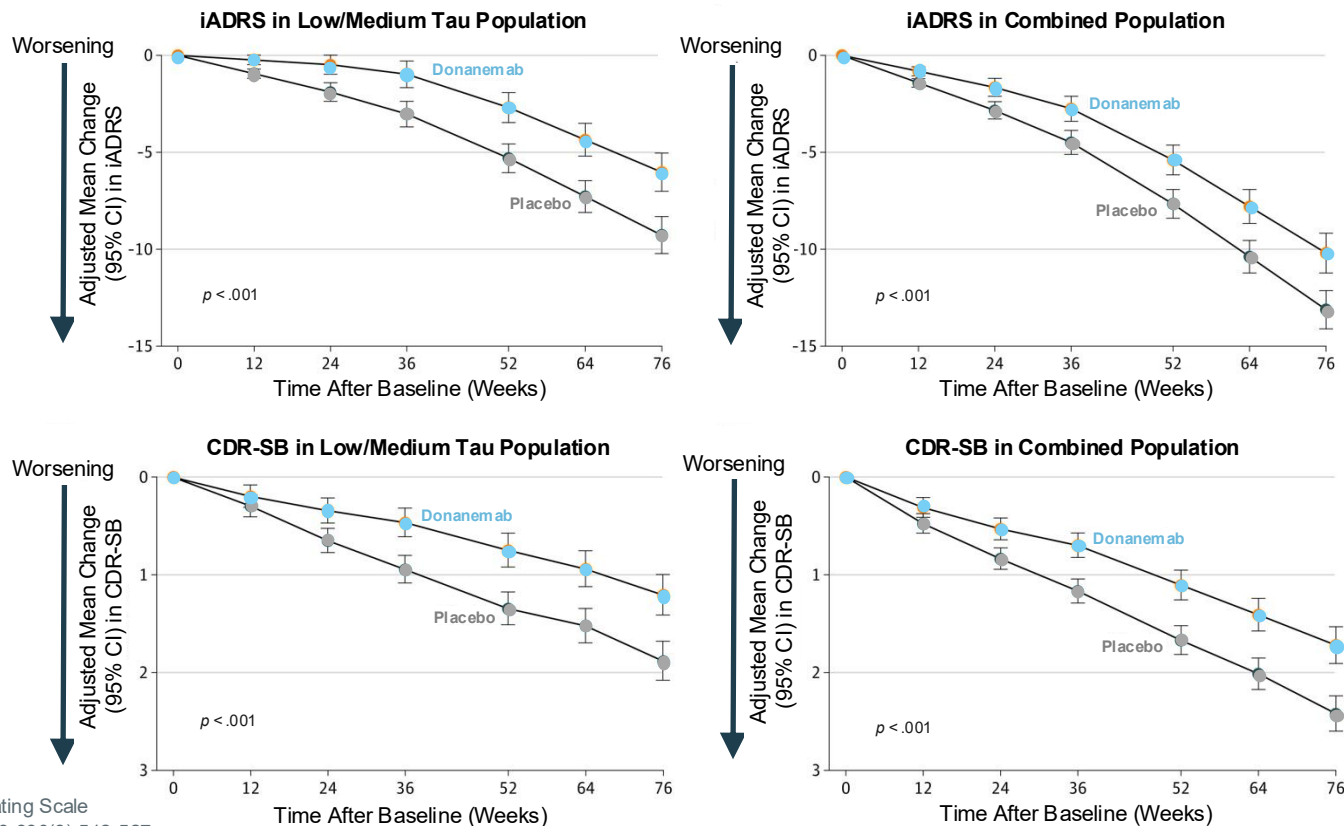


Change in score on the Clinical Dementia Rating–Sum of Boxes (CDR-SB) from baseline

CI = confidence interval

van Dyck CH. *N Engl J Med.* 2023;388(1):9-21.

# TRAILBLAZER-ALZ 2: Impact of Donanemab



N = 1,736\*

\*Participants were randomized in a 1:1 ratio to receive donanemab (n = 860) or placebo (n = 876) intravenously every 4 weeks for 72 weeks

# Monitoring for ARIA-H and ARIA-E

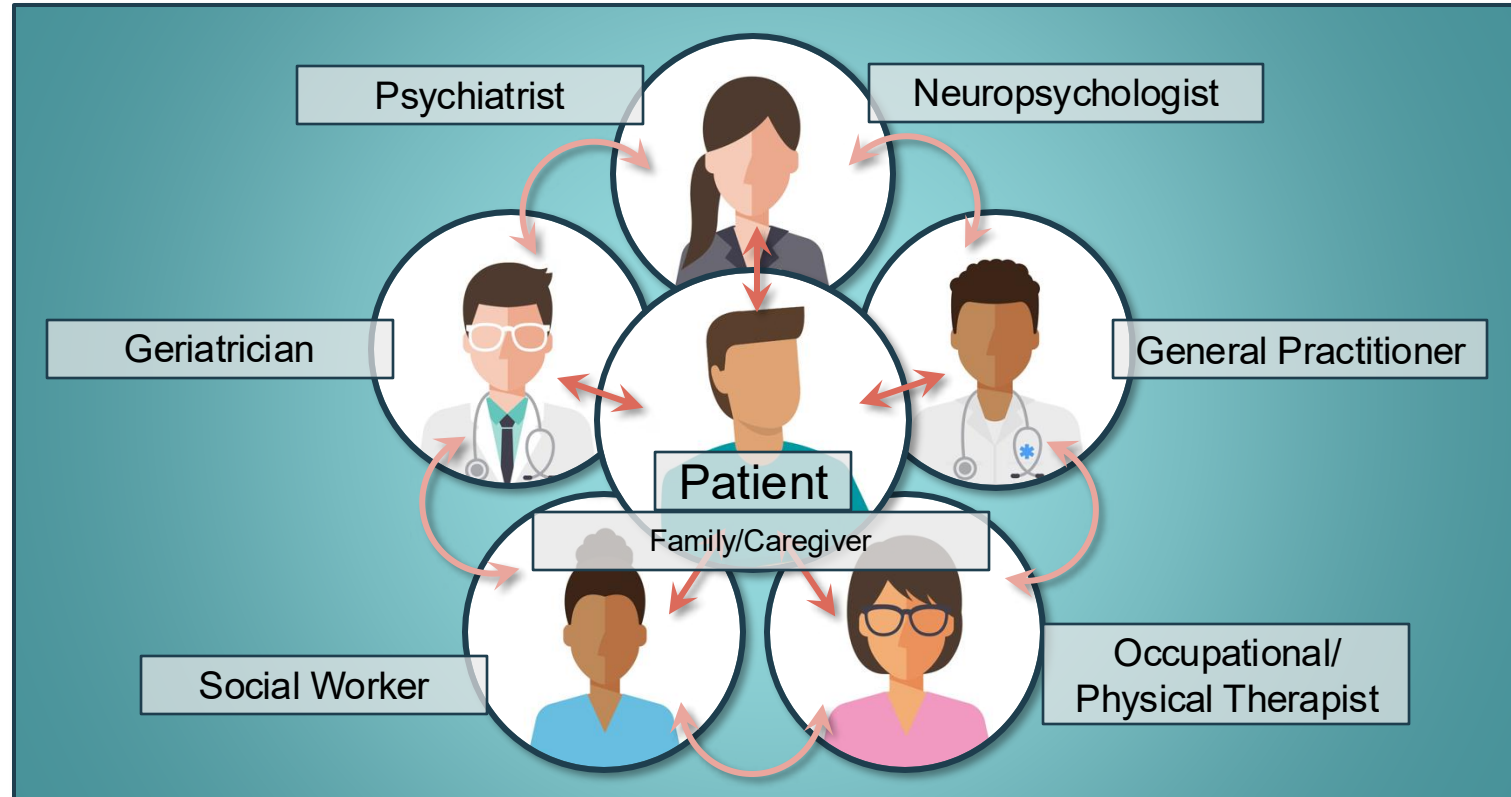
## ARIA-H

- Characterized by microhemorrhages and superficial siderosis

## ARIA-E

- Characterized by edema and effusion
- Dose dependent: higher incidence in those receiving higher doses of anti-A $\beta$  immunotherapies

# Team-Based Approach for the Management of Alzheimer's Disease



# SMART Goals

Specific, Measurable, Attainable, Relevant, Timely

- Utilize simple cognitive screening tools (e.g., MoCA) while keeping in mind time constraints and advantages and limitations in diverse populations
- Talk to your colleagues about identifying and characterizing cognitive and functional symptoms leading to a syndromic diagnosis
- Provide culturally sensitive education for patients and caregivers to improve health literacy, communication, and shared decision-making about treatments that are most effective in early stages of illness
- Consistently initiate conversations with patients and their families to destigmatize “thinking change” and normalize “normal aging”
- Collaborate with the multidisciplinary team to provide care for patients with AD and support for their caregivers

# Other Activities in This Series Include...



*Discussions on Brain Health  
and Cognitive Concerns*



*Diagnosis of AD and Treatment  
with SDM*

<https://www.cmeoutfitters.com/practice/alzheimers-disease-hub/>





*Visit the*  
**Alzheimer's Disease Education Hub**

Free resources and education for  
health care professionals and patients

<https://www.cmeoutfitters.com/practice/alzheimers-disease-hub/>

# Suggested Reading

1. Alzheimer's disease facts and figures. *Alzheimers Dement*. 2024;20(5):3708-3821.
2. Chene G, Beiser A, Au R, Preis SR, Wolf PA, Dufouil C, et al. Gender and incidence of dementia in the Framingham Heart Study from mid-adult life. *Alzheimers Dement*. 2015;11(3): 310-20.
3. Chin NA, Dinsmore D, Gonzales T, et al. Alzheimer's disease - anti-amyloid medications, early detection, and screening. *N Engl J Med*. 2024;390(10):e22.
4. Fontanella RA, Ghosh P, Pesapane A, et al. Tirzepatide prevents neurodegeneration through multiple molecular pathways. *J Transl Med*. 2024;22(1):114.
5. Galvin J, Zweig Y. The AD8: The Washington University Dementia Screening Test. <https://hign.org/consultgeri/try-this-series/ad8-washington-university-dementia-screening-test>. 2023. Accessed December 23, 2024.
6. General Practitioner Assessment of Cognition (GPCOG). <http://gpcog.com.au/>. 2016. Accessed December 24, 2024.
7. Giannisis A, Al-Grety A, Carlsson H, et al. Plasma apolipoprotein E levels, isoform composition, and dimer profile in relation to plasma lipids in racially diverse patients with Alzheimer's disease and mild cognitive impairment. *Alzheimers Res Ther*. 2023;15(1):160.
8. Kopp KO, Glotfelty EJ, Ki Y, Greig NH. Glucagon-like peptide-1 (GLP-1) receptor agonists and neuroinflammation: implications for neurodegenerative disease treatment. *Pharmacol Res*. 2022;186:106550.
9. Lim AC, Barnes LL, Weissberger GH, et al. Quantification of race/ethnicity representation in Alzheimer's disease neuroimaging research in the USA: a systematic review. *Commun Med (Lond)*. 2023;3(1):101.
10. Matthews KA, Xu W, Gaglioti AH, et al. Racial and ethnic estimates of Alzheimer's disease and related dementias in the United States (2015-2060) in adults aged ≥65 years. *Alzheimers Dement*. 2019;15(1):17-24.
11. Mielke MM, Fowler NR. Alzheimer disease blood biomarkers: considerations for population-level use. *Nat Rev Neurol*. 2024;20(8):495-504.

# Suggested Reading

12. Mini-Cog. ABC of dementia: quick screening test for dementia. <https://dementiacare.com.my/abc-of-dementia/quick-screening-test-for-dementia/>. 2021. Accessed December 24, 2024.
13. Mohs RC, Bearegard D, Dwyer J, et al. The Bio-Hermes Study: biomarker database developed to investigate blood-based and digital biomarkers in community-based, diverse populations clinically screened for Alzheimer's disease. *Alzheimers Dement*. 2024;20(4):2752-2765.
14. Montreal Cognitive Assessment (MoCA). <https://mocatest.com>. 2022. Accessed December 24, 2024.
15. Myrberg K, Hydén LC, Samuelsson C. The mini-mental state examination (MMSE) from a language perspective: an analysis of test interaction. *Clin Linguist Phonet*. 2019;34:652-670.
16. Palmqvist S, Tideman P, Mattsson-Carlgrén N, et al. Blood biomarkers to detect Alzheimer disease in primary care and secondary care. *JAMA*. 2024;332(15):1245-1257.
17. Quiroz YT, Solis M, Aranda MP, et al. Addressing the disparities in dementia risk, early detection and care in Latino populations: highlights from the second Latinos & Alzheimer's Symposium. *Alzheimers Dement*. 2022;18(9):1677-1686.
18. Ramanan VK, Graff-Radford J, Syrjanen J, et al. Association of plasma biomarkers of Alzheimer disease with cognition and medical comorbidities in a biracial cohort. *Neurology*. 2023;101(14):e1402-e1411.
19. Reiss AB, de Levante Raphael D, Chin NA, Sinha V. The physician's Alzheimer's disease management guide: early detection and diagnosis of cognitive impairment, Alzheimer's disease and related dementia. *AIMS Public Health*. 2022;9(4):661-689.
20. Roytman M, Mashriqi F, Al-Tawil K, et al. Amyloid-related imaging abnormalities: an update. *AJR Am J Roentgenol*. 2023;220(4):562-574.
21. Simons RL, Ong ML, Lei MK, et al. Racial discrimination during middle age predicts higher serum phosphorylated tau and neurofilament light chain levels a decade later: a study of aging black Americans. *Alzheimers Dement*. 2024;20(5):3485-3494.
22. Sims JR, Zimmer JA, Evans CD, et al. Donanemab in early symptomatic Alzheimer disease: the TRAILBLAZER-ALZ 2 randomized clinical trial. *JAMA*. 2023;330(6):512-527.

# Suggested Reading

23. Saint Louis University (SLU) Mental Status Exam. <https://www.slu.edu/medicine/internal-medicine/geriatric-medicine/aging-successfully/assessment-tools/mental-status-exam.php>. 2024. Accessed December 24, 2024.
24. Soares HD, Potter WZ, Pickering E, et al. Plasma biomarkers associated with the apolipoprotein E genotype and Alzheimer disease. *Arch Neurol*. 2012;69(10):1310-1317.
25. Sofer T, Kurniansyah N, Granot-Hershkovitz E, et al. A polygenic risk score for Alzheimer's disease constructed using APOE-region variants has stronger association than APOE alleles with mild cognitive impairment in Hispanic/Latino adults in the U.S. *Alzheimers Res Ther*. 2023;15(1):146.
26. Suchy-Dicey A, Howard B, Longstreth WT Jr, Reiman EM, Buchwald D. APOE genotype, hippocampus, and cognitive markers of Alzheimer's disease in American Indians: data from the Strong Heart Study. *Alzheimers Dement*. 2022;18(12):2518-2526.
27. Suchy-Dicey AM, Longstreth WT Jr, Rhoads K, et al. Plasma biomarkers of Alzheimer's disease and related dementias in American Indians: the Strong Heart Study. *Alzheimers Dement*. 2024;20(3):2072-2079.
28. Targum SD, Fosdick L, Drake KE, et al. Effect of age on clinical trial outcome in participants with probable Alzheimer's disease. *J Alzheimers Dis*. 2021;82(3):1243-1257.
29. van Dyck CH, Swanson CJ, Aisen P, et al. Lecanemab in early Alzheimer's disease. *N Engl J Med*. 2023;388(1):9-21.
30. Wang W, Wang Q, Qi X, et al. Associations of semaglutide with first-time diagnosis of Alzheimer's disease in patients with type 2 diabetes: target trial emulation using nationwide real-world data in the US. *Alzheimers Dement*. 2024 Oct 24. [Epub ahead of print].
31. Wessels AM, Dennehy EB, Dowsett SA, Dickson SP, Hendrix SB. Meaningful clinical changes in Alzheimer disease measured with the iADRS and illustrated using the donanemab TRAILBLAZER-ALZ study findings. *Neurol Clin Pract*. 2023;13(2):e200127.