

NEW ERA IN THE TREATMENT OF

Iron Deficiency in Patients with Inflammatory Bowel Disease

LIVE SYMPOSIUM

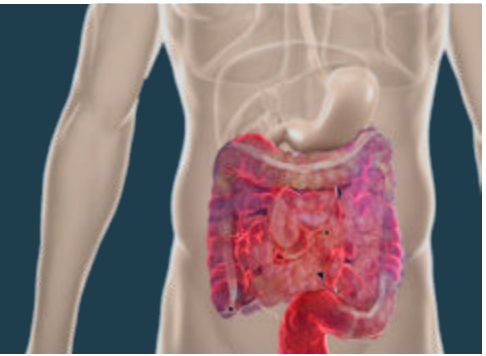
Walt Disney Swan Dolphin Hotel -
Room: Northern A-B

Saturday, December 16, 2023
12:45 pm – 1:45 pm ET

CME
OUTFITTERS 

NEW ERA IN THE TREATMENT OF

Iron Deficiency in Patients with Inflammatory Bowel Disease



Statement of Need

Anemia is the most common extraintestinal manifestation of inflammatory bowel disease (IBD), with iron deficiency (ID) being the most common cause. As such, iron replacement therapy has a paramount position in IBD management. It is imperative that iron supplementation strategies be initiated immediately upon detection of ID and be complemented by adequate disease control as it relates to suppression of inflammatory processes. In the absence of inflammation control, therapeutic approaches will be hindered by elevated hepcidin levels. Guidance is needed in the development of patient-centered treatment plans that promote adherence and optimal clinical and quality-of-life outcomes.

This CME Outfitters symposium at Advances in Inflammatory Bowel Diseases (AIBD) 2023 will feature globally renowned faculty who will discuss screening for ID in patients with IBD, the role of hepcidin in ID pathophysiology, and the basic principles of iron metabolism and absorption, including the distinction between absolute and functional ID. The expert panel will also explore the differences between oral and intravenous (IV) iron formulations; evaluate clinical trial efficacy data on IV iron, particularly in the pediatric setting; and present shared decision-making strategies.

Target Audience

This educational activity is specifically designed for gastroenterologists, hospitalists, internal medicine specialists, and other health care professionals (physicians-in-training, nurses, pharmacists, physician associates [PAs], etc.) involved and/or interested in the therapeutic management of patients with IBD.

Financial Support

Supported by an educational grant from American Regent, Inc.

Learning Objectives

At the conclusion of this activity, learners will be able to better:

- Integrate comprehensive screening tests for ID in patients with IBD based on principles of ID pathophysiology and the prevalence of IDA in patients with IBD.
- Differentiate among IV iron products, factoring in the current and emerging clinical trial data on efficacy, safety, and adverse effects (AEs) such as hypersensitivity for patients with IBD.
- Examine the use of IV iron in the pediatric IBD setting.
- Design patient-centered care plans for patients with ID and IBD, factoring in individual patient preferences and characteristics to optimize adherence and outcomes.

JOINTLY ACCREDITED PROVIDER



JOINTLY ACCREDITED PROVIDER
INTERPROFESSIONAL CONTINUING EDUCATION

In support of improving patient care, this activity has been planned and implemented by HMP Education and CME Outfitters. HMP Education is jointly accredited by the Accreditation Council for Continuing Medical Education (ACCME), the Accreditation Council for Pharmacy Education (ACPE), and the American Nurses Credentialing Center (ANCC), to provide continuing education for the healthcare team.

PHYSICIANS (ACCME)

HMP Education designates this live activity for a maximum of 1.0 *AMA PRA Category 1 Credit™*. Physicians should claim only the credit commensurate with the extent of their participation in the activity.

NOTE TO NURSE PRACTITIONERS

Nurse Practitioners can apply for *AMA PRA Category 1 Credit™* through the American Academy of Nurse Practitioners (AANP). AANP will accept *AMA PRA Category 1 Credit™* from organizations accredited by the Accreditation Council for Continuing Medical Education. Nurse practitioners can also apply for credit through their state boards.

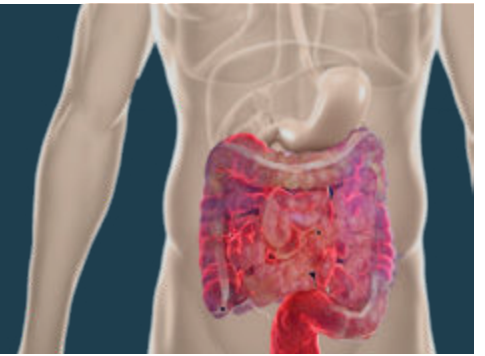
NOTE TO PAs

AAPA accepts certificates of participation for educational activities certified for *AMA PRA Category 1 Credit™* from organizations accredited by the Accreditation Council for Continuing Medical Education.

CERTIFICATE OF PARTICIPATION

This activity is certified for a maximum of 1.0 *AMA PRA Category 1 Credit(s)™*.

NEW ERA IN THE TREATMENT OF Iron Deficiency in Patients with Inflammatory Bowel Disease



Faculty

Gary R. Lichtenstein, MD

Professor of Medicine

Vice Chair, Division of Gastroenterology and Hepatology,
Development and Philanthropy

Emeritus Director, Program for Inflammatory Bowel Diseases

University of Pennsylvania Health System

The Raymond and Ruth Perelman School of Medicine
of the University of Pennsylvania

Hospital of the University of Pennsylvania

Gastroenterology Division, Department of Internal Medicine
Philadelphia, PA

Millie D. Long, MD, MPH

Professor of Medicine

Vice-Chief for Education

Director, Gastroenterology and Hepatology Fellowship Program

Division of Gastroenterology and Hepatology

University of North Carolina

Chapel Hill, NC

Neilanjan Nandi, MD, FACP

Associate Professor of Clinical Medicine

Division of Gastroenterology & Hepatology

The Raymond and Ruth Perelman School of Medicine of the
University of Pennsylvania

Penn Presbyterian Medical Center

University of Pennsylvania

Philadelphia, PA



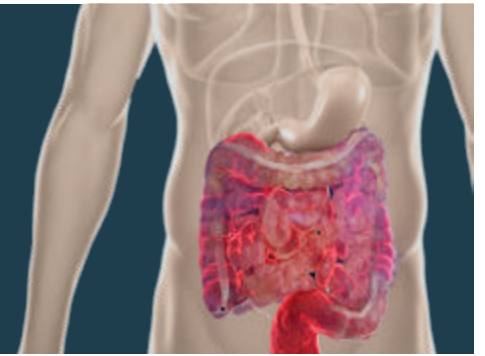
Gary R. Lichtenstein, MD

Gary R. Lichtenstein, MD, is the Vice Chief, Division of Gastroenterology, Development and Philanthropy; Emeritus Director of the Inflammatory Bowel Disease Program; and Professor of Medicine in the Gastrointestinal Division of the Department of Medicine at the Hospital of the University of Pennsylvania and the University of Pennsylvania School of Medicine in Philadelphia, Pennsylvania. Dr. Lichtenstein earned his medical degree from the Mount Sinai School of Medicine in New York, New York. He then completed his internship and residency in internal medicine at Duke University Medical Center in Durham, North Carolina. He also served a fellowship in gastroenterology at the Hospital of the University of Pennsylvania of the University of Pennsylvania School of Medicine. His current research interests encompass investigational therapies for the treatment of ulcerative colitis and Crohn's disease and his research has had a significant focus on the safety of current and future medical therapy. He has also focused his research on the natural history of disease. Dr. Lichtenstein has received numerous research grants focusing on these areas and has served as the national/international principal investigator evaluating novel agents for therapeutic trials in the treatment of ulcerative colitis and Crohn's disease.

A Fellow of the American Gastroenterological Association (AGA), the American College of Physicians, and the American College of Gastroenterology, Dr. Lichtenstein is listed in *Best Doctors in America* (inflammatory bowel disease [IBD]) and has served as Medical Secretary for the American Board of Internal Medicine, Gastroenterology Section. He holds membership and committee positions in many professional societies at a national level, including the AGA where he has served as Vice Chair of the Clinical Practice Committee and Practice Economics Committee and where he has served as Chair of the Clinical Practice Committee; the American Society for Gastrointestinal Endoscopy where he has served on the committee on training; and the American College of Gastroenterology where he has served on the Education Committee, Programs Committee, and Nominations Committee. He recently served as a member of the research committee. He has been the chair of numerous abstract review committees for IBD for the American College of Gastroenterology and the AGA and has served as section chair and moderator for numerous sessions at Digestive Disease Week. Dr. Lichtenstein is also a member of the Crohn's and Colitis Foundation of America where he served at the national level as the chair of the membership committee of the Clinical Research Alliance, on the National Grants Review Committee, on the National Physician Education Committee, and currently as chair of the Membership Committee. Additionally, he is a longstanding member of the American College of Physicians and the American Medical Association.

Dr. Lichtenstein has received numerous awards, including the National Scientific Achievement Award from the national Crohn's and Colitis Foundation of America (CCFA), for his clinical work and research. In 2020, he was recipient of the AGA's top academic clinician award (the AGA Distinguished Clinician Award in Academic Practice). He received the award for the top specialist in the University of Pennsylvania Health System (the Louis A. Duhring Award) as well as the top teaching award in all of University of Pennsylvania (the Christian R. and Mary F. Lindback Award). Additionally, he has received the medical school teaching award (the Penn Pearls Award), the Department of Medicine house staff teaching award (the Donald B. Martin Teaching Award), and the Gastroenterology Division teaching award (the Sidney Cohen Teaching Award).

NEW ERA IN THE TREATMENT OF Iron Deficiency in Patients with Inflammatory Bowel Disease



Dr. Lichtenstein is listed in *Philadelphia Magazine* among top gastroenterologists for elderly in Philadelphia and among top gastroenterologists in Philadelphia (special focus: IBD). He is the recipient of the CCFA Physician of the Year Award: Philadelphia and Delaware Valley Chapters.

In addition to having served on the editorial board of the journals *Gastroenterology*, *American Journal of Gastroenterology*, *Inflammatory Bowel Diseases*, *World Journal of Gastroenterology*, and *Digestive Diseases and Sciences*, Dr. Lichtenstein served as a former writer of Selected Summaries in the journal *Gastroenterology* and as the Section Editor of Selected Summaries as well as Print and Media Review in *Gastroenterology* for a 5-year term. He has been and is currently serving as a reviewer for journals such as *The New England Journal of Medicine*, *Gastroenterology*, *The Lancet*, *Annals of Internal Medicine*, *Clinical Gastroenterology and Hepatology*, *Gut*, *Journal of Parenteral and Enteral Nutrition*, *The American Journal of Gastroenterology*, *World Journal of Gastroenterology*, and *Journal of Clinical Gastroenterology*. He is the journal founder and Executive Editor of the PubMed-indexed journal *Gastroenterology and Hepatology*, now in press for 18 years, and has served as Associate Editor of *Therapeutic Advances in Gastroenterology*, *The Physician and Sports Medicine*, and *Clinical Investigation* and has served as Assistant Editor-in-Chief of *World Journal of Gastroenterology*. He is the author or coauthor of more than 150 primary research articles, 280 chapters, editorials, and reviews, has edited 32 books, and has presented over 350 abstracts. Dr. Lichtenstein has been an invited speaker at the local, national, and international levels, speaking at over 500 conferences, lectures, symposia, and institutional grand rounds.



Millie D. Long, MD, MPH

Millie D. Long, MD, MPH, is board certified in internal medicine, preventive medicine, and gastroenterology. Dr. Long received her medical degree from University of Virginia in 2002. She then completed residency in internal medicine and a chief residency at University of Alabama at Birmingham. She completed fellowships in gastroenterology and hepatology, preventive medicine, and inflammatory bowel disease, all at University of North Carolina. She is currently Professor of Medicine in the Department of Medicine and Director of the Gastroenterology and Hepatology Fellowship Program at University of North Carolina at Chapel Hill.

Dr. Long's clinical practice is at the UNC Multidisciplinary Inflammatory Bowel Diseases (IBD) Center. Her research interests include prevention of complications of IBD, women's health, and clinical epidemiology. Dr. Long has contributed to over 200 peer-reviewed publications, book chapters, and review articles and to the medical literature. She is the current co-Editor in Chief of the *American Journal of Gastroenterology*. She also serves as an invited reviewer for

journals such as *Inflammatory Bowel Diseases* and *Gastroenterology*.

Dr. Long is a fellow of the American College of Gastroenterology, where she serves on the Board of Trustees. She is also a fellow of the American Gastroenterological Association and the Crohn's and Colitis Foundation, where she co-chairs the Clinical Research Alliance.

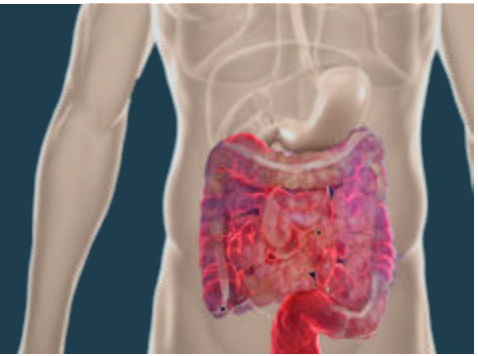


Neilanjan Nandi, MD, FACP

Neilanjan Nandi, MD, FACP, is Associate Professor of Clinical Medicine at Penn Presbyterian Medical Center at the University of Pennsylvania. Dr. Nandi's practice focuses on the management of inflammatory bowel disease (IBD) (e.g., Crohn's disease, ulcerative colitis) and recurrent *Clostridium difficile* (*C. difficile*) infection via fecal microbiota transplantation (FMT). Dr. Nandi serves on the executive council of the Philadelphia Crohn's & Colitis Foundation (CCF) and on the medical advisory board of the United Ostomy Associates of America (UOAA), coordinates outreach on the American College of Gastroenterology Patient Care Committee, and is a founding board member of the South Asian IBD Alliance (SAIA). He also regularly peer reviews research publications and serves on the social media editorial board for the premier journals *Inflammatory Bowel Diseases* and *Crohn's & Colitis 360*. His research has focused on studying conditions co-morbid to IBD quality of care, namely the diagnosis and management of refractory *C. difficile* infection and the application of FMT in *C. difficile*; also, characterizing the management and consequences of iron deficiency anemia and non-alcoholic fatty liver disease in patients with IBD. Dr. Nandi has authored numerous book chapters on the diagnosis and management of various viral, parasitic, mycobacterial, and bacterial infections of the gastrointestinal (GI) tract.

Dr. Nandi's fervor for clinical education has been recognized with multiple teaching awards. He was honored as the 2019 Physician Hero by the Philadelphia/Delaware Valley Crohn's and Colitis Foundation at their annual Take Steps for Crohn's & Colitis event, and wields digital and social media platforms to amplify education, outreach, and advocacy in IBD to clinicians and patients. He was also awarded the Philadelphia CCF's Chairman's Citation in 2022. He is the regular host of the academic podcast *GI Insights: IBD Crosstalk*, which features high-yield, evidence-based medicine discussions with guests from different interdisciplinary fields critical to providing comprehensive IBD care. Dr. Nandi's passions include fitness, cooking, virtual reality gaming, reading, and dancing. Follow him on social @fitwitmd.

NEW ERA IN THE TREATMENT OF Iron Deficiency in Patients with Inflammatory Bowel Disease



Disclosure Declarations

It is the policy of CME Outfitters, LLC, to ensure independence, balance, objectivity, and scientific rigor and integrity in all of their CE activities. Faculty must disclose to the participants any relationships with commercial companies whose products or devices may be mentioned in faculty presentations, or with the commercial supporter of this CE activity. CME Outfitters, LLC, has evaluated, identified, and mitigated any potential conflicts of interest through a rigorous content validation procedure, use of evidence-based data/research, and a multidisciplinary peer review process. The following information is for participant information only. It is not assumed that these relationships will have a negative impact on the presentations.

Dr. Lichtenstein reports the following financial relationships:

Consultant: AbbVie Inc.; Bristol Myers Squibb Company; Eli Lilly and Company (DSMB Data Safety Monitoring Board); Endo Pharmaceuticals; Ferring Pharmaceuticals; Gilead Sciences, Inc.; Janssen Orthobiotech (Funding to University of PA); Kabi Fresenius; MedEd Consultants, LLC; Merck & Co., Inc.; Morphic Therapeutic, Inc.; Pfizer Inc. (Funding to University of PA); Prometheus Laboratories, Inc.; Romark; Salix Pharmaceuticals/Valeant Pharmaceuticals; Sandoz; Shire Pharmaceuticals; Takeda Pharmaceuticals U.S.A., Inc. (Funding to University of PA); UCB, Inc.; and Virgo Pharmaceuticals

Research Support: Bristol Myers Squibb Company; Janssen Orthobiotech (Funding to University of PA); Takeda Pharmaceuticals U.S.A., Inc.; and UCB, Inc.

Other financial or material support: American Journal of Gastroenterology (Associate Editor); Gastro-Hep Communications (Editor); Professional Communications, Inc. (Royalty); SLACK, Inc. (Royalty); Springer Science and Business Media (Editor); and UpToDate - Walters Kluwer

Dr. Long reports the following financial relationships:

Consultant: AbbVie Inc.; Bristol Myers Squibb Company; Intercept Pharmaceuticals, Inc.; Janssen Pharmaceuticals, Inc.; Lilly; Pfizer Inc.; Prometheus

Biosciences, Inc.; Takeda Pharmaceuticals U.S.A., Inc.; and Target RWE

Research Support: Lilly; Pfizer Inc.; and Takeda Pharmaceuticals U.S.A., Inc.

Dr. Nandi reports the following financial relationships:

Consultant: AbbVie Inc.; Boehringer-Ingelheim; Bristol Myers Squibb Company; Janssen Pharmaceuticals, Inc.; and Pfizer Inc.

The following individuals have no financial relationships to disclose:

- Rebecca Vargas-Jackson, MD (peer reviewer)
- Shirley Michelle Franks, MSN, APRN, FNP-BC (peer reviewer)
- Walter Ancarrow (HMP reviewer)
- Jennifer Browne (HMP reviewer)
- Molly Duda (HMP reviewer)
- Samantha Joy (HMP reviewer)
- Dan Lowrie (HMP reviewer)
- Aniella Murphy (HMP reviewer)
- Andrea Zimmerman (HMP reviewer)
- Susan Perry (planning committee)
- Kasey Brandt, PharmD (planning committee)
- Susan H. Yarbrough, CHCP (planning committee)
- Sandra Caballero, PharmD (planning committee)
- Sharon Tordoff (planning committee)

Faculty of this CE activity may include discussions of products or devices that are not currently labeled for use by the FDA. The faculty have been informed of their responsibility to disclose to the audience if they will be discussing off-label or investigational uses (any uses not approved by the FDA) of products or devices.

Post-tests, credit request forms, and activity evaluations must be completed online (requires free account activation), and participants can print their certificate or statement of credit immediately (75% pass rate required). This website supports all browsers except Internet Explorer for Mac. For complete technical requirements and privacy policy, visit www.cmeoutfitters.com/privacy-and-confidentiality-policy.



DOWNLOADABLE RESOURCES

Downloadable resources will be available at: cmeoutfitters.com/AIBDresources

ENGAGE WITH US

Follow us on social media @[cmeoutfitters](https://twitter.com/cmeoutfitters) for announcements about upcoming CME opportunities, healthcare news, and more!

Thank you for
joining us today!