

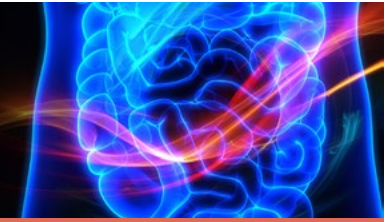
# REVISITING IBS:

## Recrafting the Diagnosis for More Timely Treatment and Patient-Centered Care

**Monday, May 23, 2022** | **6:30–8:00 PM PT** Doors open  
at 5:45 PM  
Aqua ABCD | Hilton San Diego Bayfront, San Diego, CA



# REVISITING IBS: Recrafting the Diagnosis for More Timely Treatment and Patient-Centered Care



## AGENDA

Symposium begins at 6:30 PM

## FACULTY

William D. Chey, MD, AGAF,  
FACG, FACP (Moderator)

Timothy T. Nostrant Collegiate Professor  
of Gastroenterology  
Professor of Nutrition Sciences  
Chief, Division of Gastroenterology & Hepatology  
Departments of Internal Medicine and  
Nutritional Sciences  
Michigan Medicine  
University of Michigan  
Ann Arbor, MI

Lin Chang, MD

Professor of Medicine  
Vice-Chief, Vatche and Tamar Manoukian  
Division of Digestive Diseases  
Co-Director, G. Oppenheimer Center for  
Neurobiology of Stress and Resilience  
David Geffen School of Medicine at UCLA  
Los Angeles, CA

Amy Ladewski, PA-C, RD, MMS

Physician Assistant  
Digestive Health Center  
Northwestern Memorial Hospital  
Chicago, IL

## TARGET AUDIENCE

Physicians, PAs, nurse practitioners, nurses, and pharmacists  
specializing in gastroenterology and/or primary care

## FINANCIAL SUPPORT

Supported by educational grants from AbbVie and  
Ironwood Pharmaceuticals

## LEARNING OBJECTIVES

At the end of this CME/CE activity, participants should be able to:

- Implement strategies to improve diagnostic accuracy of IBS through the use of patient queries and diagnostic tools.
- Recognize efficacy and safety of IBS therapies to inform treatment decision-making.
- Implement approaches for patient-centered care for IBS, such as SDM, education, and PROs.

## CREDIT INFORMATION

### Jointly Accredited Provider:



In support of improving patient care, CME Outfitters, LLC, is jointly accredited by the Accreditation Council for Continuing Medical Education (ACCME), the Accreditation Council for Pharmacy Education (ACPE), and the American Nurses Credentialing Center (ANCC), to provide continuing education for the healthcare team.

### Physicians (ACCME):



CME Outfitters, LLC, designates this live activity for a maximum of 1.5 *AMA PRA Category 1 Credit(s)*<sup>™</sup>. Physicians should claim only the credit commensurate with the extent of their participation in the activity.

### Nurses (ANCC):

This activity is designated for 1.5 contact hours. Note to Nurse Practitioners: Nurse practitioners can apply for *AMA PRA Category 1 Credit(s)*<sup>™</sup> through the American Academy of Nurse Practitioners (AANP). AANP will accept *AMA PRA Category 1 Credit(s)*<sup>™</sup> from Jointly Accredited Organizations. Nurse practitioners can also apply for credit through their state boards.

### Pharmacists (ACPE):

This application-based activity is approved for 1.5 contact hours (0.15 CEUs) of continuing pharmacy credit (JA0007185-0000-22-071-L01-P).

### PA's (AAPA):

CME Outfitters, LLC, has been authorized by the American Academy of PAs (AAPA) to award AAPA Category 1 CME credit for activities planned in accordance with AAPA CME Criteria. This activity

is designated for 1.5 AAPA Category 1 CME credits. PAs should only claim credit commensurate with the extent of their participation.

### ABIM MOC Credit:



Successful completion of this CME activity, which includes participation in the evaluation component, enables the participant to earn up to 1.5 medical knowledge MOC points in the American Board of Internal Medicine's (ABIM) Maintenance of Certification (MOC) program. Participants will earn MOC points equivalent to the amount of CME credits claimed for the activity. It is the CME activity provider's responsibility to submit participant completion information to ACCME for the purpose of granting ABIM MOC credit.

### Royal College MOC:

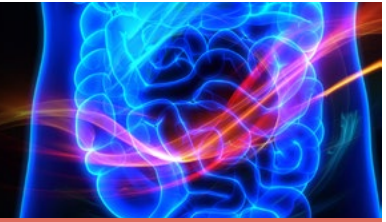
Through an agreement between the Accreditation Council for Continuing Medical Education and the Royal College of Physicians and Surgeons of Canada, medical practitioners participating in the Royal College MOC Program may record completion of accredited activities registered under the ACCME's "CME in Support of MOC" program in Section 3 of the Royal College's MOC Program.

### MIPS Improvement Activity:



This activity counts towards MIPS Improvement Activity requirements under the Medicare Access and CHIP Reauthorization Act of 2015 (MACRA). Clinicians should submit their improvement activities by attestation via the CMS Quality Payment Program website.

# REVISITING IBS: Recrafting the Diagnosis for More Timely Treatment and Patient-Centered Care



## William D. Chey, MD, AGAF, FACP, FCGP (Moderator)



Dr. Chey received a medical degree and training in internal medicine at Emory University School of Medicine. He completed a fellowship in gastroenterology and has remained as faculty at the University of Michigan in Ann Arbor where he is currently the Timothy T. Nostrant Collegiate Professor of Gastroenterology. He holds a joint appointment in the Department of Nutrition Sciences.

Dr. Chey's research interests focus on the diagnosis and treatment of functional bowel disorders and *H. pylori* infection. He has mentored more than 50 students, residents, fellows, and junior faculty, many of which are leaders in gastroenterology. He is a medical innovator and holds several patents. Dr. Chey is former Co-Editor-in-Chief of the *American Journal of Gastroenterology* and has authored more than 350 manuscripts, reviews, chapters, and books. He is a member of the Board of Trustees of the American College of Gastroenterology, Board of Directors of the Rome Foundation, Council of the American Neurogastroenterology and Motility Society, and Board of Directors of the International Foundation of Functional Gastrointestinal Disorders.

Dr. Chey has been elected to *Best Doctors* since 2001 and received the Dean's Outstanding Clinician Award and Dean's Award for Innovation and Commercialization at the University of Michigan. He has also received the Distinguished Clinician Award from the American Gastroenterological Association. In 2020 he was awarded honorary membership to the Academy of Nutrition and Dietetics and the prestigious Berk/Fise Award from the American College of Gastroenterology.

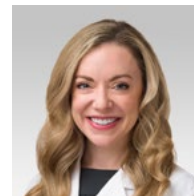
## Lin Chang, MD



Dr. Chang is a Professor of Medicine and Vice-Chief of the Vatche and Tamar Manoukian Division of Digestive Diseases, Department of Medicine at the David Geffen School of Medicine at UCLA. She serves as the Co-Director of the G. Oppenheimer Center for Neurobiology of Stress and Resilience at UCLA. She is also Program Director of the UCLA Gastroenterology Fellowship Program. Dr. Chang's

clinical expertise is in disorders of gut-brain interaction (also known as functional gastrointestinal disorders). Her research focuses on brain-gut interactions underlying irritable bowel syndrome (IBS), specifically, the pathophysiology of IBS related to stress, early life adversity, sex differences, genetic and epigenetic factors, and gut microbiome as well as the treatment of IBS. She has recently served as the Clinical Research Councilor of the AGA Governing Board. Dr. Chang previously served as President of the American Neurogastroenterology and Motility Society (ANMS) and is a member of the Rome Foundation Board of Directors.

## Amy Ladewski, PA-C, RD, MMS

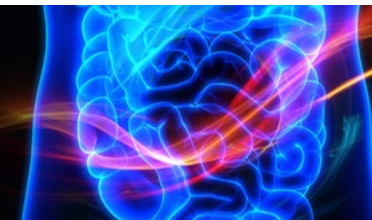


Amy Ladewski is a physician assistant within the department of digestive health at Northwestern Memorial Hospital in Chicago, IL. She specializes in functional bowel and neurogastrointestinal disorders, in addition to managing general GI patients. She currently serves as the Vice President of the national non-profit organization GHAPP (Gastroenterology & Hepatology Advanced Practice Providers), with a mission to educate and

help advance the careers of GI APPs. Amy serves as an adjunct teacher for the Northwestern Feinberg School of Medicine Physician Assistance program and was recently awarded preceptor of the year. With a background as a registered dietitian, she prioritizes nutrition counseling with her patients. Amy strives to develop collaborative and trusted relationships with her patients to empower them toward better health and wellness.



# REVISITING IBS: Recrafting the Diagnosis for More Timely Treatment and Patient-Centered Care



## DISCLOSURE DECLARATIONS

It is the policy of CME Outfitters, LLC, to ensure independence, balance, objectivity, and scientific rigor and integrity in all of their CE activities. Faculty must disclose to the participants any relationships with commercial companies whose products or devices may be mentioned in faculty presentations, or with the commercial supporter of this CE activity. CME Outfitters, LLC, has evaluated, identified, and mitigated any potential conflicts of interest through a rigorous content validation procedure, use of evidence-based data/research, and a multidisciplinary peer review process. The following information is for participant information only. It is not assumed that these relationships will have a negative impact on the presentations.

### Dr. Chey reports the following financial relationships:

- **Consultant:** AbbVie Inc; Alnylam Pharmaceuticals Inc.; Arena Pharmaceuticals, Inc.; Biomerica, Inc.; Covita; Everlywell, Inc.; Gemelli Biotech; IM Health; Ironwood Pharmaceuticals, Inc.; ISOThrive Inc.; Nestle; Phathom Pharmaceuticals; Progenity, Inc.; QOL Medical; RedHill Biopharma Inc.; Salix Pharmaceuticals/Valeant Pharmaceuticals; Takeda Pharmaceuticals U.S.A., Inc.; Urovant Sciences, Inc.; and Vibrant Pharma Inc.
- **Research Support:** Biomerica, Inc.; Commonwealth Diagnostics International, Inc.; U.S. Food and Drug Administration (FDA); National Institutes of Health (NIH); QOL Medical; and Salix Pharmaceuticals
- **Stock Shareholder (directly purchased):** Options: GI OnDEMAND; ISOThrive Inc.; and ModifyHealth, LLC
- **Other:** Patents: Digital Manometry; Nutrition Health; and Rectal Expulsion Device

### Dr. Chang reports the following financial relationships:

- **Advisory Board:** Ardelyx; Arena Pharmaceuticals, Inc.; Cosmo Pharmaceuticals; Immunic Therapeutics; Ironwood Pharmaceuticals, Inc.; Mauna Kea Technologies; and Protagonist Therapeutics Inc.
- **Consultant:** Trellus, Inc.

- **Research Support:** AnX Robotica; Arena Pharmaceuticals, Inc.; Ironwood Pharmaceuticals, Inc.; and Vanda Pharmaceuticals
- **Speakers Bureau:** AbbVie Inc.
- **Stock Shareholder (ownership interest):** ModifyHealth, LLC and Trellus, Inc.

### Ms. Ladewski reports the following financial relationships:

- **Advisory Board:** Mahana Therapeutics, Inc. and Phathom Pharmaceuticals
- **Consultant:** Ironwood Pharmaceuticals, Inc. and Salix Pharmaceuticals
- **Speakers Bureau:** Salix Pharmaceuticals and Takeda Pharmaceuticals U.S.A., Inc.

### The following peer reviewer and CME Outfitters staff report no financial relationships:

- Jeffrey Helfand, DO (peer reviewer)
- Susan Perry (planning committee)
- Kasey Brandt, PharmD (planning committee)
- Susan H. Yarbrough, CHCP (planning committee)
- Sharon Tordoff (planning committee)

Faculty of this CE activity may include discussions of products or devices that are not currently labeled for use by the FDA. The faculty have been informed of their responsibility to disclose to the audience if they will be discussing off-label or investigational uses (any uses not approved by the FDA) of products or devices.

Post-tests, credit request forms, and activity evaluations must be completed online (requires free account activation), and participants can print their certificate or statement of credit immediately (75% pass rate required). This website supports all browsers except Internet Explorer for Mac. For complete technical requirements and privacy policy, visit [www.cmeoutfitters.com/privacy-and-confidentiality-policy](http://www.cmeoutfitters.com/privacy-and-confidentiality-policy).

# REVISITING IBS:

## Recrafting the Diagnosis for More Timely Treatment and Patient-Centered Care



### INSTRUCTIONS FOR INTERACTIVE TECHNOLOGY

Please use the iPads provided at your table to answer polling questions, view onsite presentations, and submit questions to the faculty. Please follow the instructions below:

#### 1. Get Connected

Please connect to the CME Outfitters network with your mobile device or laptop. This network does not have a password. \*Please note that this network is a local network and does NOT mean you are connected to the internet. Once you have joined the network, go to [arraylearn.com](http://arraylearn.com). You are now connected to the symposium. All content and polling questions can be viewed on your device as long as you are connected to the above listed network.

#### 2. Ask a Question to the Faculty

Please select the *Ask Question* tab below the slide viewer. Please include the faculty member's name if the question is specifically for them. Your question will be sent to the faculty for the question and answer portion of the session.

#### 3. View and Take Notes on Presentation Slides

Please click on the *Take Notes* tab. If you did not enter your email address when you joined the meeting, you will be required to do so for note-taking. When the meeting is complete, all your notes will be emailed to you within 5 business days.

### OBTAINING CREDIT

Learners must complete the posttest and evaluation on the iPads. CME Outfitters will email their certificates within 30 days to the email provided upon login to the digital array system.

### DOWNLOADABLE RESOURCES

Downloadable resources will be available at [www.cmeoutfitters.com/IBS22resources](http://www.cmeoutfitters.com/IBS22resources).

### ENGAGE WITH US

Follow us on [@cmeoutfitters](https://twitter.com/cmeoutfitters) for announcements about upcoming CME opportunities, healthcare news, and more!

*Thank you for joining us today!*