



EMERGING BIOLOGICS IN IBD

WHERE WILL THEY FIT
IN YOUR PRACTICE?

BREAKFAST MEETING | BELLAGIO HOTEL | MONET 1 AND 2 | 6:00AM - 7:30AM

MIPS Improvement Activity + Earn ABIM MOC Credit

FRIDAY | FEBRUARY 8, 2019

Doors open at 5:30AM - Meeting starts at 6:00AM

Co-provided by



This program is not affiliated with the Crohn's and Colitis Congress®.

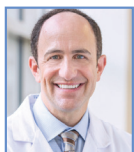
EMERGING BIOLOGICS IN IBD

WHERE WILL THEY FIT IN YOUR PRACTICE?

AGENDA

Breakfast begins at 5:30 AM
Symposium begins at 6:00 AM to 7:30 AM

FACULTY



David T. Rubin, MD, FACG, AGAF, FACP, FASGE
Chairman
Digestive Diseases Center
University of Chicago Medicine
Chicago, IL



Anita Afzali, MD
The Ohio State University
Inflammatory Bowel Disease Center
Columbus, OH



Marla C. Dubinsky, MD
Icahn School of Medicine
at Mount Sinai
New York, NY

TARGET AUDIENCE

Gastroenterologists, physician assistants, nurse practitioners, nurses, and pharmacists who interact with patients with IBD.

COMMERCIAL SUPPORT

Supported by an educational grant from Janssen Biotech, Inc., administered by Janssen Scientific Affairs, LLC.

REGISTRATION INFORMATION

For more information on this symposium and to pre-register visit www.CMEOutfitters.com/IBDbiologics or scan the QR code on the right.



#IBDbiologics

EMERGING BIOLOGICS IN IBD

WHERE WILL THEY FIT IN YOUR PRACTICE?

LEARNING OBJECTIVES

- Evaluate clinical and real-world evidence for current and emerging targeted treatments for patients with IBD.
- Select patients with IBD who would benefit from early biologic therapy based on risk stratification.
- Implement personalized management plans for patients with IBD that factor in clinical recommendations, treatment goals, continuous monitoring, and medication adjustments as needed.

The following learning objectives pertain only to those requesting CNE or CPE credit:

- Evaluate clinical and real-world evidence for current and emerging targeted treatments for patients with IBD.
- Identify patients with IBD who would benefit from early biologic therapy based on risk stratification.
- Describe personalized management plans for patients with IBD that factor in clinical recommendations, treatment goals, continuous monitoring, and medication adjustments as needed.

ACCREDITATION INFORMATION

CME Credit: USF Health is accredited by the Accreditation Council for Continuing Medical Education (ACCME) to provide continuing medical education for physicians.

USF Health designates this live activity for a maximum of 1.5 *AMA PRA Category 1 Credit(s)*[™]. Physicians should claim only the credit commensurate with the extent of their participation in the activity.


CNE Credit: Provider approved by the California Board of Registered Nursing, Provider Number CEP 15510, for 1.5 contact hours.

Note to Nurse Practitioners and Clinical Nurse Specialists: the content of this activity pertains to pharmacology. Earn up to 1.5 contact hours of pharmacotherapeutic contact hours.

Note to Nurse Practitioners: Nurse practitioners can apply for *AMA PRA Category 1 Credit*[™] through the American Academy of Nurse Practitioners (AANP). AANP will accept *AMA PRA Category 1 Credit*[™] from organizations accredited by the Accreditation Council for Continuing Medical Education. Nurse practitioners can also apply for credit through their state boards.

Note to Physician Assistants: AAPA accepts certificates of participation for educational activities certified for *AMA PRA Category 1 Credit*[™] from organizations accredited by the Accreditation Council for Continuing Medical Education.

CPE Credit: CME Outfitters, LLC, is accredited by the Accreditation Council for Pharmacy Education as a provider of continuing pharmacy education. 1.5 contact hours (0.15 CEUs).

 Universal Activity Number: 0376-0000-19-006-L01-P

Type: knowledge-based

ABIM MOC Credit: Successful completion of this CME activity, which includes participation in the evaluation component, enables the participant to earn up to 1.5 MOC points in the American Board of Internal Medicine's (ABIM) Maintenance of Certification (MOC) program. Participants will earn MOC points equivalent to the amount of CME credits claimed for the activity. It is the CME activity provider's responsibility to submit participant completion information to ACCME for the purpose of granting ABIM MOC credit.

EMERGING BIOLOGICS IN IBD

WHERE WILL THEY FIT IN YOUR PRACTICE?



David T. Rubin, MD, FACG, AGAF, FACP, FASGE (Chairman)

Joseph B. Kirsner Professor of Medicine
Section Chief, Gastroenterology, Hepatology and Nutrition
Co-Director, Digestive Diseases Center
University of Chicago Medicine
Chicago, IL

BIOGRAPHY

Dr. Rubin is Chief of the Section of Gastroenterology, Hepatology & Nutrition and the Co-Director of the Digestive Diseases Center at The University of Chicago Medicine. Dr. Rubin earned a medical degree with honors at The University of Chicago Pritzker School of Medicine. He completed his residency in internal medicine and fellowships in gastroenterology and clinical medical ethics at the University of Chicago, where he served as Chief Resident and Chief Fellow. Prior to his current appointments, Dr. Rubin served for 11 years as Director of the Gastroenterology, Hepatology and Nutrition fellowship program. He also currently serves as an associate faculty member at the MacLean Center for Clinical Medical Ethics and an associate investigator at the University of Chicago Comprehensive Cancer Center.

Dr. Rubin is a Fellow of the American Gastroenterological Association (AGA), the American College of Gastroenterology (ACG), the American Society for Gastrointestinal Endoscopy (ASGE) and the American College of Physicians (ACP) and an active national member of the Crohn's & Colitis Foundation (CCF), and is on the Board of Trustees for the ACG. Among numerous awards and honors, Dr. Rubin was chosen by his peers as a member of Best Doctors (recognized for superior clinical ability) and America's Top Physicians (gastroenterology). Additionally, he twice received the ACG's Governor's Award of Excellence in Clinical Research (2003 and 2013), the Cancer Research Foundation Young Investigator's Award (2004), and the UC Postgraduate Teaching Award in recognition of significant contributions for fellowship education (2006). In 2012, he received the CCF Rosenthal Award, a national leadership award bestowed upon a volunteer who has contributed in an indisputable way to the quality of life of patients and families. He is currently the Chair-elect of the National Scientific Advisory Committee of the CCF. He is an Associate Editor of the journal Gastroenterology and Co-Editor of the ACG On-Line Educational Universe.

Dr. Rubin is the editor of a best-selling book on inflammatory bowel disease (IBD), now in its 3rd edition, and an author or coauthor of many peer-reviewed articles on treatment and management of IBD, cancer in IBD and novel paradigms, as well as the first author of the in progress ACG Guidelines for ulcerative colitis. His current research is in the area of progressive complications from uncontrolled inflammation, the doctor-patient relationship in IBD, and a variety of collaborative studies related to the microbiome and intestinal disease. He is also a featured media contact for issues related to IBD, appearing on satellite radio, television, print media and maintains a popular twitter feed @IBDMD (>6000 followers). His principal research interests include novel IBD therapies and outcomes, colon cancer prevention, and clinical medical ethics.

EMERGING BIOLOGICS IN IBD

WHERE WILL THEY FIT IN YOUR PRACTICE?



Anita Afzali, MD

Medical Director
Department of Gastroenterology,
Hepatology and Nutrition
The Ohio State University Inflammatory Bowel
Disease Center
Columbus, OH

BIOGRAPHY

Dr. Afzali is an Associate Professor of Clinical Medicine and a Gastroenterologist that specializes in Inflammatory Bowel Disease (IBD) at The Ohio State University Wexner Medical Center. She is the Medical Director of the OSU Inflammatory Bowel Disease Center and holds the Abercrombie & Fitch Endowed Chair in Inflammatory Bowel Disease.

She received her medical degree from the University of Washington School Of Medicine. She then completed her Internal Medicine residency and a Gastroenterology fellowship at the University of Washington in Seattle, WA. While in fellowship, Dr. Afzali worked in outcomes research and epidemiology, and also graduated with a Master's in Public Health (MPH). Her sub-specialty training includes a one-year advanced IBD fellowship at the University of Washington, prior to becoming faculty at UW Medicine. While practicing at the University of Washington – Harborview Medical Center, Dr. Afzali served as the Director of the IBD Program and Associate Medical Director of the UW-HMC Gastroenterology Clinics.

Her research interests include clinical outcomes and risks of IBD therapy, pharmacoepidemiology, pharmacoconomics, as well as the impact of race/ethnicity in IBD, pediatric-to-adult transition, and women of childbearing age with IBD. In collaboration with Seattle Children's Hospital, she has developed the first Pediatric to Adult IBD Transition Clinic in the Northwest. She has had extensive peer-reviewed publications, an invited lecturer on national and international programs, and serves as an expert thought leader on several national and international advisory boards and panels.

Dr. Afzali serves on several committees including a Co-Chair of the Crohn's & Colitis National Professional Education Committee (NPEC) and Member of the American College of Gastroenterology (ACG) Minority Affairs and Cultural Diversity committee.

EMERGING BIOLOGICS IN IBD

WHERE WILL THEY FIT IN YOUR PRACTICE?



Marla C. Dubinsky, MD

Professor, Departments of Pediatrics and Medicine
Chief of Gastroenterology and Nutrition
Co-Director, Susan and Leonard Feinstein Inflammatory
Bowel Disease Clinical Center
Icahn School of Medicine at Mount Sinai
New York, NY

BIOGRAPHY

Dr. Dubinsky received a medical degree from Queen's University in Canada and completed her clinical pediatric gastroenterology training at Sainte-Justine Hospital, University of Montreal in Quebec, Canada. Currently, Dr. Dubinsky is Chief of Pediatric Gastroenterology, Hepatology and Nutrition, as well as Co-Director of the Susan and Leonard Feinstein Inflammatory Bowel Disease Clinical Center and Professor of Pediatrics and Medicine at the Icahn School of Medicine at Mount Sinai Hospital in New York.

Board certified in pediatrics and pediatric gastroenterology, Dr. Dubinsky holds positions of prominence with several advisory bodies, including Chair of the Western Regional Pediatric IBD Research Alliance and President of We Care in IBD. She is a member of several professional societies, including the American Gastroenterology Association, the American College of Gastroenterology, and the American Academy of Pediatrics.

Dr. Dubinsky's work has been published in numerous peer-reviewed journals, including *Gastroenterology*, *The Journal of Pediatric Gastroenterology and Nutrition*, *Inflammatory Bowel Diseases*, and *the American Journal of Gastroenterology*. In addition, she has authored book chapters for *Trends in Inflammatory Bowel Disease Therapy and Inflammatory Bowel Disease: Diagnosis and Therapeutics*. Dr. Dubinsky has lectured widely nationally and internationally. Dr. Dubinsky's main research interests are the influence of genetics and immune responses on the variability in clinical presentations of early-onset IBD and prognosis. Additional interests include the study of pharmacogenetics to evaluate how heredity influences drug responses and optimizing and individualizing the management of IBD as well as the impact of IBD on fertility and pregnancy.

EMERGING BIOLOGICS IN IBD

WHERE WILL THEY FIT IN YOUR PRACTICE?

DISCLOSURE DECLARATION

It is the policy of USF Health and CME Outfitters, LLC, to ensure independence, balance, objectivity, and scientific rigor and integrity in all of their CE activities. Faculty must disclose to the participants any relationships with commercial companies whose products or devices may be mentioned in faculty presentations, or with the commercial supporter of this CE activity. CME Outfitters, LLC, has evaluated, identified, and attempted to resolve any potential conflicts of interest through a rigorous content validation procedure, use of evidence-based data/research, and a multidisciplinary peer review process. The following information is for participant information only. It is not assumed that these relationships will have a negative impact on the presentations.

Dr. Rubin reports that he receives grants from AbbVie Inc.; Genentech, Inc./Roche; Janssen Pharmaceuticals, Inc.; Prometheus Laboratories Inc.; Shire; Takeda Pharmaceuticals U.S.A., Inc. He is a consultant for AbbVie Inc.; AbGenomics; Allergan; Arena Pharmaceuticals, Inc.; Biomica; Genentech, Inc./Roche; Janssen Pharmaceuticals, Inc.; Eli Lilly and Company; Merck & Co., Inc.; Medtronic; Napo Pharmaceuticals, Inc.; Pfizer Inc.; Shire; Takeda Pharmaceuticals U.S.A., Inc.; TARGET PharmaSolutions, Inc. He is on the Board of Trustees for the American College of Gastroenterology; is Co-Founder, CFO of Cornerstones Health, Inc. (non-profit); and is Co-Founder of GoDuRn, LLC.

Dr. Afazali reports that she receives research support from AbbVie Inc.; Celgene Corporation; Janssen Pharmaceuticals, Inc. and Takeda Pharmaceuticals U.S.A., Inc. She serves on the speakers bureau and consultant for AbbVie Inc.; Janssen Pharmaceuticals, Inc.; Pfizer Inc.; Takeda Pharmaceuticals U.S.A., Inc. and UCB, Inc. She receives other financial or material support IBD Horizons (nonprofit organization) Board Member.

Dr. Dubinsky reports that she receives research support from AbbVie Inc.; Janssen Pharmaceuticals, Inc.; and Pfizer, Inc. She is a consultant for AbbVie Inc.; Arena Pharmaceuticals, Inc.; Boehringer Ingelheim; Celgene Corporation; Eli Lilly and Company; Genentech, Inc.; Janssen Pharmaceuticals, Inc.; Pfizer Inc.; Prometheus Laboratories Inc.; Salix Pharmaceuticals; Shire; Takeda Pharmaceuticals U.S.A., Inc. and UCB, Inc.

Dr. Helfand (peer reviewer) has no disclosures to report.

Ms. Ochoa (peer reviewer) has no disclosures to report.

Kate Nelson, PhD (planning committee) has no disclosures to report.

Jan Perez (planning committee) has no disclosures to report.

Susan Perry (planning committee) has no disclosures to report.

Sharon Tordoff (planning committee) has no disclosures to report.

Disclosures were obtained from the CME Outfitters, LLC staff: No disclosures to report.

Disclosures were obtained from the USF Health staff: No disclosures to report.

CME Outfitters, LLC, USF Health, and the faculty do not endorse the use of any product outside of the FDA labeled indications. Medical professionals should not utilize the procedures, products, or diagnosis techniques discussed during this activity without evaluation of their patient for contraindications or dangers of use. discussing off-label or investigational uses (any uses not approved by the FDA) of products or devices.

EMERGING BIOLOGICS IN IBD

WHERE WILL THEY FIT IN YOUR PRACTICE?

INSTRUCTIONS FOR INTERACTIVE TECHNOLOGY

If you would like to use your tablet or mobile device to answer polling questions, view the onsite presentations, and submit questions to the faculty, please follow the instructions below:

1. Get Connected

- Please connect to the CME Outfitters network with your mobile device or laptop. This network does not have a password.
** Please note that this network is a local network and does NOT mean you're connected to the internet.*
- Once you have joined the network, go to arraylearn.com.
- You are now connected to the symposium. All content and polling questions can be viewed on your device as long as you are connected to the above listed network.

2. Ask a Question to the Faculty

- Please click on “**Ask a Question**” and type your question. Please include the faculty member’s name if the question is specifically for them. Your question will be sent to the faculty for the question and answer portion of the session.

3. View and Take Notes on Presentation Slides

- Please click on the “**Take a Slide Note**” button. If you did not enter your email address when you joined the meeting, you will be required to do so for note taking. When the meeting is complete, all your notes will be emailed to you within 5 business days.

OBTAINING CREDIT

Learners must complete the posttest and evaluation on the iPads. CME Outfitters will email their certificates within 30 days to the email provided upon login to the digital array system..

DOWNLOADABLE RESOURCES

Downloadable resources will be available at
www.cmeoutfitters.com/IBDbiologicsResources



EMERGING BIOLOGICS IN IBD

WHERE WILL THEY FIT IN YOUR PRACTICE?

ENGAGE WITH US ON TWITTER

Follow us on **@cmeoutfitters** for announcements about upcoming CME opportunities, health care news, and more!

We will be live tweeting from today’s symposium – tweet us your questions using
#IBDbiologics

BE SURE TO CHECK OUT WHAT’S COMING UP IN IBD AT THE CME OUTFITTERS GASTROENTEROLOGY HUB

Visit the hub for a list of free CE activities, downloadable resources, and that you can use in your practice to improve outcomes for your patients.

WWW.CMEOUTFITTERS.COM/GASTROHUB

THANK YOU FOR JOINING US TODAY