



11TH ANNUAL **CHAIR SUMMIT**

CME
Outfitters 

Master Class for Neuroscience Professional Development

February 7-9, 2019 | The Westin Fort Lauderdale | Florida

 **#CHAIR2019**

Provided by

CME
Outfitters 

TABLE OF CONTENTS

Important Meeting Information	2
• B.Y.O.D. Technology Instructions.....	2
• Instructions for Evaluations, Obtaining Credit, and Presentation Slides ..	2
• Wi-Fi Access Code	2
Meeting Details and Accreditation Information	3
10th Annual Chair Summit Agenda and Educational Tracks.....	4-8
Faculty Information.....	9-18
• Presenting Faculty Titles and Affiliations	9
• Faculty Bios.....	10-16
• Disclosure Declaration	17-18
Twitter Guide	19
Notes Pages.....	20-23
Hotel Floor Plan.....	24

ACKNOWLEDGEMENTS

Funding for this certified CME/CE activity is provided by educational grants as listed below.

The ADHD sessions are supported by an independent medical educational grant from Shire, now part of Takeda.

The migraine sessions are supported by an educational grant from Teva Pharmaceuticals.

The neuromodulation sessions are supported by an educational grant from LivaNova.

The OUD sessions are supported by an educational grant from Indivior Inc.

The schizophrenia sessions are supported by an educational grant from Indivior Inc.

11TH ANNUAL CHAIR SUMMIT

Master Class for Neuroscience Professional Development



INSTRUCTIONS FOR OUR INTERACTIVE TECHNOLOGY

If you would like to use your own tablet or mobile device to answer polling questions, or if you're using one of our iPads to view the onsite presentations, and submit questions to the faculty, please follow the instructions below:

1. Get Connected

- Please connect to the **CME Outfitters** network with your mobile device or laptop. This network does not have a password. **Please note that this network is a local network and does not mean you're connected to the internet.**
- Once you have joined the network, go to **arraylearn.com**
- You will be required to provide your email. Please enter your **email address**, and click submit.
- You are now connected to the symposium. All content and polling questions can be viewed on your device as long as you are connected to the above listed network.

2. Ask a Question to the Faculty

- Please click on "**Submit a Faculty Question**" and type your question. Please include the faculty member's name if the question is specifically for them. Your question will be sent to the faculty for the question and answer portion of the session.

3. View and Take Notes on Presentation Slides

- Please click on the "**Take a Note on this Slide**" button. When the meeting is complete, all your notes will be emailed to you within 5 business days.

EVALUATIONS AND CREDIT REQUEST

Plenary session evaluations will be automatically available on the iPads at the end of each session during Q&A. Breakout session evaluations will be automatically available on the iPads following each designed breakout block in the agenda. An overall conference evaluation will be automatically available on the iPads on the last day of the conference.



Please visit **www.chairsummit.com/credit** once you return home and claim your credits. You will be able to print your certificate immediately.

EMAIL ADDRESS

Your e-mail address is required and will be used for the daily evaluations link, outcomes, educational research, and certification. **We will never exchange, sell, or rent your e-mail to any third-party for commercial purpose.**

PRESENTATION SLIDES



Presentation slides will be available for download at **www.chairsummit.com/2019resources**

WI-FI ACCESS*

Connect to the internet via hotel wi-fi using hotel network: **ChairSummit** and password: **neurocme**.

** Please keep in mind that when you are connected to the symposium network the wireless internet access is no longer available, which helps ensure the highest quality tablet experience.*

ACTIVITY GOAL

To collaboratively evaluate evidence, engage in peer-to-peer learning, and apply evidence to routine clinical practice to develop individualized management strategies for improved outcomes for patients with psychiatric and neurologic disorders.

LEARNING OBJECTIVES

At the end of this CME/CE conference, participants should be able to:

- Integrate evidence-based best care into everyday clinical practice, including the latest measurement- and outcomes-based clinical research and data on psychiatric and neurologic disorders.
- Translate current and emerging scientific evidence into clinical practice and individualized care decisions for psychiatric and neurologic disorders.
- Actively participate in open, unfiltered discussions with experts, interdisciplinary team members, and colleagues regarding the challenges in daily clinical practice so that new insights can be applied to improve patient care.

The following learning objectives pertain only to those requesting CNE/CPE credit:

- Identify validated questionnaires used to assess symptoms of psychiatric and neurologic disorders.
- Describe best practices for diagnosis and treatment of psychiatric and neurologic disorders based on review of high-level evidence and discussions with clinical experts and colleagues.

TARGET AUDIENCE

Physicians, physician assistants, nurses, nurse practitioners, pharmacists, certified case managers, social workers, and other non-physician health care professionals with an interest in psychiatry, neurology, and the neurosciences.

CE CREDIT INFORMATION

CME Credit (Physicians): CME Outfitters, LLC, is accredited by the Accreditation Council for Continuing Medical Education (ACCME) to provide continuing medical education for physicians.

CME Outfitters, LLC, designates this live activity for a maximum of 20 *AMA PRA Category 1 Credits™*. Physicians should claim only the credit commensurate with the extent of their participation in the activity.

Physician Assistants: The NCCPA accepts *AMA PRA Category 1 Credit™* from organizations accredited by the AMA (providers accredited by the ACCME).

ABPN MOC: Sessions from this activity will be submitted to the American Board of Psychiatry and Neurology for review and approval for MOC credit.

ABIM MOC: Successful completion of this CME activity, which includes participation in the evaluation component, enables the participant to earn up to 20 MOC points in the American Board of Internal Medicine's (ABIM) Maintenance of Certification (MOC) program. Participants will earn MOC points equivalent to the amount of CME credits claimed for the activity. It is CME Outfitters' responsibility to submit participant completion information to the ACCME for the purpose of granting ABIM MOC Credit.

CNE Credit (Nurses): Provider approved by the California Board of Registered Nursing, Provider Number CEP 15510, for 20 contact hours.

ANCC (Nurses): For all of your CNE requirements for recertification, the ANCC will accept *AMA PRA Category 1 Credits™* from organizations accredited by the ACCME.

CPE Credit (Pharmacists): CME Outfitters, LLC, is accredited by the Accreditation Council for Pharmacy Education as a provider of continuing pharmacy education. 20 contact hours (2.0 CEUs)



© Universal Program Numbers: 0376-0000-19-009-L01-P
Activity Type: Knowledge-based

MIPS IMPROVEMENT ACTIVITY

This activity counts towards MIPS Improvement Activity requirements under the Medicare Access and CHIP Reauthorization Act of 2015 (MACRA). Clinicians should submit their improvement activities by attestation via the CMS Quality Payment Program website.

11TH ANNUAL CHAIR SUMMIT



Master Class for Neuroscience Professional Development

LOCATIONS AT-A-GLANCE

All Plenary Sessions: Florida Ballroom (First Floor)

Exhibitors / Reception: Keys Ballroom (First Floor)

Breakout & Chart Review Sessions: Noted in the Agenda Below (Second Floor)

Hotel floor plan on page 24 for reference

THURSDAY, FEBRUARY 7TH: 11:00 AM – 6:00 PM

- 11:00 – 12:45 **REGISTRATION / CHECK-IN**
- 1:00 – 1:30 **WELCOME TO THE 11TH ANNUAL CHAIR SUMMIT**
Charles B. Nemeroff, MD, PhD
- 1:30 – 2:15 The Status of Laboratory Testing to Predict
Antidepressant Response
Charles B. Nemeroff, MD, PhD
- 2:15 – 3:00 Individualizing Care in Migraine: From Prevention to Acute
Management
David D. Dodick, MD
- 3:00 – 3:45 Brain-Informed Use of Hormones: From Oral Contraceptives
to Gender Affirming Hormone Therapy
C. Neill Epperson, MD
- 3:45 – 4:15 **BREAK**
- 4:15 – 5:00 Convergence of Placenta Biology and Genetic Risk for
Schizophrenia
Daniel Weinberger, MD
- 5:00 – 6:00 Patients Keep Asking About Cannabis: The Data Behind Its
Use in Neurology and Psychiatry
*Panel Discussion with Mark S. Gold, MD; Paul R. Carney, MD;
Igor Grant, MD, FRCP(C); Joel J. Silverman, MD*

FRIDAY, FEBRUARY 8TH: 7:30 AM – 7:00 PM

- 7:30 – 8:15 **BREAKFAST / EXHIBITS**
- 7:30 – 8:00 **BREAKFAST WITH AN EXPERT**
(Seating is limited - please sign-up for your spot at the registration desk)
- Traumatic Brain Injury
Joel J. Silverman, MD
- Addressing Agitation in the ER and other Clinical Settings
Leslie Zun, MD, MBA
- Sleep Disorders
W. Vaughn McCall, MD, MS
- Neurodevelopmental Research, Insights, and Clinical Practice
Stephan J. Sanders, BMBS, PhD

8:15 – 9:00	The Pluses and Minuses of Ketamine for Major Depression <i>Alan F. Schatzberg, MD</i>
9:00 – 9:45	Scientific Updates on the Receptor Pharmacology of Treatments for Bipolar Depression <i>Mark A. Frye, MD</i>
9:45 – 10:30	Epidemiology and Emerging Role of CBD for Pediatric Epilepsy Syndromes <i>Paul R. Carney, MD</i>
10:30 – 11:00	BREAK
11:00 – 11:45	BREAKOUT SESSIONS (ROUND I)
	How to Proceed with Treatment-Resistant Depression When the Evidence-Base is Scant <i>Charles B. Nemeroff, MD, PhD; Alan F. Schatzberg, MD</i> <i>(Venice)</i>
	60's Revenge: Psychedelics in Treatment Resistant Conditions <i>Paul Summergrad, MD</i> <i>(Lido)</i>
	Addressing Your Greatest Concerns in Schizophrenia Management: From Suicide to Relapse Prevention and the Role of LAIs <i>John Lauriello, MD</i> <i>(Coral Gables)</i>
	Genetic Testing in Autism Spectrum Disorder: Its Role in Clinical Management <i>Stephan J. Sanders, BMBS, PhD</i> <i>(San Marco)</i>
	Evidence-Based Assessment and Treatment of the Psychiatric Patient in the Emergency Department <i>Leslie Zun, MD, MBA</i> <i>(Exchange)</i>
	What's New in the Burnout Literature? <i>Joel J. Silverman, MD</i> <i>(Executive)</i>
	Pain Regulation in Health and Disease <i>Jon-Kar Zubieta, MD, PhD</i> <i>(Forum)</i>
11:45 – 12:00	OPEN DISCUSSION Q&A / EVALUATIONS / EXHIBITS
12:00 – 12:45	BREAKOUT SESSIONS (ROUND II) (Same as Round I, See 11:00 – 11:45)
12:45 – 1:30	LUNCH / EXHIBITS
1:30 – 2:15	Throwing a Lifeline to Your Patients with Postpartum Depression: Recognition, Accurate Diagnosis, and Management <i>David R. Rubinow, MD</i>

11TH ANNUAL CHAIR SUMMIT



Master Class for Neuroscience Professional Development

- 2:15 – 3:00 HIV-Associated Neurocognitive Disorders
Igor Grant, MD, FRCP(C)
- 3:00 – 3:30 **BREAK**
- 3:30 – 4:15 **CHART REVIEW SESSIONS (ROUND I)**
- Mood and Sleep Disturbances after RRSO
C. Neill Epperson, MD
(Venice)
- Is This a Candidate for Neuromodulation?
W. Vaughn McCall, MD, MS
(San Marco)
- Challenges of Managing an Impaired Healthcare Provider
Mark S. Gold, MD; Paul Summergrad, MD
(Lido)
- Applying Data to Practice: Integrating New Therapies for Migraine in Real-World Patients
Teshamae Monteith, MD, FAHS
(Exchange)
- Finding the Right Fit: The Use of LAIs in Schizophrenia Management
John Lauriello, MD
(Executive)
- Pain
Jon-Kar Zubieta, MD, PhD
(Forum)
- Overcoming the Clinical Challenges of Tardive Dyskinesia – A Practical Approach
Carlos Singer, MD
(Coral Gables)
- 4:15 – 4:30 **OPEN DISCUSSION Q&A / EVALUATIONS / EXHIBITS**
- 4:30 – 5:15 **CHART REVIEW SESSIONS (ROUND II)**
(Same as Round I, See 3:30 – 4:15)
- 5:15 – 5:30 **OPEN DISCUSSION Q&A / EVALUATIONS / EXHIBITS**
- 5:30 – 6:15 Thinking Outside the Box: Novel Strategies to Improve Outcomes in OUD
Mark S. Gold, MD
- 6:15 – 7:00 **WINE AND CHEESE RECEPTION / CHAIR AWARD**
(Keys Ballroom)

SATURDAY, FEBRUARY 9: 7:30 AM – 2:45 PM

- 7:30 – 8:30 **BREAKFAST / EXHIBITS**
- 7:45 – 8:15 **BREAKFAST WITH AN EXPERT**
Seating is limited - please sign-up for your spot at the registration desk
- Adapting to Change When Your Practice Changes
Steven Siegel, MD, PhD

- Anxiety
Ned H. Kalin, MD
- 8:30 – 9:15 Moving the Needle for Optimal Outcomes in Schizophrenia Management: An Update on Long-Acting Injectables and Strategies for Shared Decision-Making
John Lauriello, MD
- 9:15 – 10:00 State-of-the-Art Management of ADHD in Children, Adolescents, and Adults: Best Practices and Emerging Strategies
Barbara J. Coffey, MD, MS
- 10:00 – 10:30 **BREAK**
- 10:30 – 11:15 **BREAKOUT SESSIONS (ROUND III)**
- Integrating the Latest Therapeutic Advances to Improve Patient Outcomes in Upper Limb Spasticity
Gemayaret Alvarez, MD
(Venice)
- Redesigning Student Mental Health to Meet the Student's Needs
Steven Siegel, MD, PhD
(San Marco)
- Clinical Trial Updates on ADHD Therapies: Translating Data to Practice
Barbara J. Coffey, MD, MS
(Lido)
- Creating Individualized Treatment Plans for Patients with Migraine
Teshamae Monteith, MD, FAHS
(Exchange)
- Integrating New Evidence-Based Approaches for the Management of Tardive Dyskinesia
Carlos Singer, MD
(Executive)
- The Medical Differential Diagnosis of Psychiatric Disorders
Paul Summergrad, MD
(Forum)
- What is Psychiatry's Role in Treating Opioid Use Disorder?
Mark S. Gold, MD
(Florida Ballroom)
- Promoting Change in the Management of Treatment-Resistant Depression: Neuromodulation in Remission and Recovery
W. Vaughn McCall, MD, MS
(Coral Gables)
- 11:15 – 11:30 **OPEN DISCUSSION Q&A / EVALUATIONS / EXHIBITS**
- 11:30 – 12:15 **BREAKOUT SESSIONS (ROUND IV)**
(Same as Round III, See 10:30 – 11:15)

12:15 – 12:30 **OPEN DISCUSSION Q&A / EVALUATIONS / EXHIBITS**

12:30 – 1:15 **SUMMIT SLAM LUNCH SESSION**

“It Changed the Way I Practiced”

Have you ever experienced a clinical interaction that stopped you in your tracks and ultimately led to a change in the way you practice? Whether it be with a patient, a caregiver, or a fellow colleague, most clinicians can point to an instance in which a real-life situation altered the way they approach their clinical practice.

Submit a form (found at the registration desk) to **share your story** during Saturday’s unique lunchtime plenary session: When lunch begins, storytellers will be called up to share their 5-minute stories with the crowd and a panel of judges selected from the audience. At the end of the session, **YOU could be named Summit SLAM Champion & take home the grand prize.**

Don’t miss this chance to share your experience with Chairs & fellow attendees and walk away as the Summit SLAM Champ!

1:15 – 2:00 **Early Life Predictors for Developing Anxiety and Depression**
Ned H. Kalin, MD

2:00 – 2:45 **Why Are So Many Clinical Trials in Alzheimer’s Disease Failing?**
Panel discussion lead by Charles B. Nemeroff, MD, PhD

2:45 **WRAP UP AND ADJOURNMENT OF THE
11TH ANNUAL CHAIR SUMMIT**

PRESENTING FACULTY

Charles B. Nemeroff, MD, PhD (Chairman)

Professor of Psychiatry
 Director, Institute for Early Life Adversity Research
 University of Texas Dell Medical School
 Austin, TX
 Professor and Chair Emeritus
 Department of Psychiatry & Behavioral Sciences
 University of Miami Miller School of Medicine
 Miami, FL

Gemayaret Alvarez, MD

Assistant Professor
 University of Miami Miller School of Medicine
 Medical Director of the Neuro-Rehabilitation Service at Jackson Memorial
 Hospital
 Miami, FL

Paul R. Carney, MD

Professor of Neurology, Pediatrics, and Neuroscience
 University of North Carolina at Chapel Hill
 Chapel Hill, NC

Barbara J. Coffey, MD, MS

Division Chief, Child and Adolescent Psychiatry
 Director, UHealth Tics, OCD and Related Problems
 Professor, Department of Psychiatry and Behavioral Sciences
 University of Miami Miller School of Medicine
 Miami, FL

David W. Dodick, MD

Professor
 Department of Neurology
 Mayo Clinic College of Medicine and Science
 Scottsdale, AZ

C. Neill Epperson, MD

Robert Freedman Endowed Professor and Chair
 Department of Psychiatry
 University of Colorado School of Medicine - Anschutz Medical Campus
 Aurora, CO

Mark A. Frye, MD

Professor & Chair, Department of Psychiatry and Psychology
 Stephen & Shelly Jackson Family Professorship in Individualized
 Medicine
 Director, Mayo Clinic Depression Center
 Mayo Clinic
 Rochester, MN

Mark S. Gold, MD

ASAM's Annual Lifetime Achievement John P. McGovern
 Award & Prize winner
 Adjunct Professor of Psychiatry
 Washington University School of Medicine
 St. Louis, MO
 17th University of Florida Distinguished Alumni Professor
 Gainesville, FL

Igor Grant, MD, FRCP(C)

Mary Gilman Marston Distinguished Professor
 Chair, Department of Psychiatry
 Director, HIV Neurobehavioral Research Program
 Director, Center for Medicinal Cannabis Research
 University of California, San Diego
 La Jolla, CA

Ned H. Kalin, MD

Hedberg Professor and Chairman
 Department of Psychiatry
 University of Wisconsin School of Medicine and Public Health--Madison
 Director, HealthEmotions Research Institute
 Editor-in-Chief - *American Journal of Psychiatry*
 Madison, WI

John Lauriello, MD

Professor and Chairman
 Robert J. Douglas MD and Betty Douglas
 Distinguished Faculty Scholar in Psychiatry
 Department of Psychiatry
 University of Missouri
 Medical Director
 University of Missouri Psychiatric Center
 Columbia, MO

W. Vaughn McCall, MD, MS

Case Distinguished University Chair
 Department of Psychiatry and Health Behavior
 Executive Vice Dean
 Medical College of Georgia
 Augusta University
 Augusta, GA

Teshamae Monteith, MD, FAHS

Chief, Headache Division
 Fellowship Program Director
 Assistant Professor of Clinical Neurology
 Department of Neurology
 University of Miami, Miller School of Medicine
 Miami, FL

David R. Rubinow, MD

Chair, Department of Psychiatry
 Assad Meymandi Distinguished Professor of Psychiatry
 Professor of Medicine
 Director, UNC Innovation and Health Care System Transformation
 Director, UNC Center for Women's Mood Disorders
 University of North Carolina at Chapel Hill
 Chapel Hill, NC

Stephan J. Sanders, BMBS, PhD

Assistant Professor
 Department of Psychiatry
 University of California San Francisco
 San Francisco, CA

Alan F. Schatzberg, MD

Kenneth T. Norris, Jr., Professor
 Department of Psychiatry and Behavioral Sciences
 Stanford University School of Medicine
 Stanford, CA

Steven Siegel, MD, PhD

Professor and Chair
 Department of Psychiatry and Behavioral Sciences
 Franz Alexander Chair in Psychiatry
 Keck School of Medicine
 University of Southern California
 Los Angeles, CA

Joel J. Silverman, MD

Chairman, Department of Psychiatry
 James Asa Shield, Jr., MD, Professor of Psychiatry
 Medical College of Virginia
 Virginia Commonwealth University
 Richmond, VA

Carlos Singer, MD

Professor of Neurology
 Director, Division of Parkinson's Disease and Movement Disorders
 University of Miami Miller School of Medicine
 Miami, FL

Paul Summergrad, MD

Dr. Frances S. Arkin Professor and Chairman
 Department of Psychiatry
 Professor of Medicine
 Tufts University School of Medicine
 Psychiatrist-in-Chief
 Tufts Medical Center
 Past President, American Psychiatric Association
 Boston, MA

Daniel R. Weinberger, MD

Director and CEO, Lieber Institute for Brain Development
 Professor, Departments of Psychiatry, Neurology, Neuroscience, and
 Human Genetics
 The McKusick - Nathans Institute of Genetic Medicine
 Johns Hopkins University School of Medicine
 Baltimore, MD

Jon-Kar Zubieta, MD, PhD

William H. and Edna Stimson Presidential Endowed Chair
 Professor and Chair
 Department of Psychiatry
 Psychiatrist-in-Chief
 University Neuropsychiatric Institute
 University of Utah Health Sciences Center
 Salt Lake City, UT

Leslie S. Zun, MD, MBA

Chairman & Professor
 Department of Emergency Medicine
 Professor
 Department of Psychiatry and Behavioral Sciences
 Rosalind Franklin University of Medicine and Science/The Chicago
 Medical School
 Chicago, IL

11TH ANNUAL CHAIR SUMMIT



Master Class for Neuroscience Professional Development

FACULTY BIOS

Charles B. Nemeroff, MD, PhD (Chairman)

Prior to joining Dell Med, Dr. Nemeroff was chair of the Department of Psychiatry and Behavioral Sciences and clinical director of the Center on Aging at the University of Miami Miller School of Medicine in Miami, Florida. He has served as president of the American College of Psychiatrists (ACP) and the American College of Neuropsychopharmacology (ACNP) and sits on the Scientific Advisory Board and board of directors of the American Foundation for Suicide Prevention (AFSP) and the Anxiety and Depression Association of America (ADAA). He is a member of the APA Council on Research and chairs both the APA Research Colloquium for Young Investigators and the APA Work Group on Biomarkers and Novel Treatments. His research is focused on the pathophysiology of mood and anxiety disorders with a focus on the role of child abuse and neglect as a major risk factor. He has also conducted research on the role of mood disorders as a risk factor for major medical disorders including heart disease, diabetes and cancer. He has published more than 1,100 research reports and reviews, and his research is currently supported by grants from the National Institutes of Health. He has also served on the Mental Health Advisory Council of National Institute of Mental Health and the Biomedical Research Council for NASA; is co-editor in chief (with Alan F. Schatzberg, MD) of the Textbook of Psychopharmacology, published by the APA Press and now in its fifth edition; co-editor in chief of a new text book on Post-Traumatic Stress Disorders, and is the co-editor in chief of a new journal published by Elsevier: Personalized Medicine in Psychiatry.

He received his MD and PhD (Neurobiology) degrees at the University of North Carolina (UNC) School of Medicine. After psychiatry residency training at UNC and Duke University, he held faculty positions at Duke and at Emory University before relocating to the University of Miami in 2009.

Gemayaret Alvarez, MD

Dr. Alvarez is the Medical Director of the Neuro-Rehabilitation Service at Jackson Memorial Hospital (JMH), and she also sees outpatients at JMH and UMHC. She treats a wide range of brain disorders, including traumatic brain injury and strokes. Dr. Alvarez attended Medical School at Ross University in Dominica, West Indies receiving her Doctorate of Medicine in 2007 and completed her Physical Medicine and Rehabilitation Residency at Kingsbrook Jewish Medical Center, New York, in 2011 where she served as chief resident. Dr. Alvarez completed her fellowship training in brain injury at the Carolinas Rehabilitation Medical Center in North Carolina. Her clinical specialization is in acquired brain injury rehabilitation management, neuropharmacology, and Botox injection and baclofen pumps for spasticity management.

Paul R. Carney, MD

Paul R. Carney, MD, is Professor of Neurology, Pediatrics, and Neuroscience at the University of North Carolina at Chapel Hill. Dr. Carney is an internationally recognized expert in the diagnosis and treatment of individuals with epilepsy and other chronic neurologic disorders. He has authored more than 350 articles, abstracts, books, and book chapters. His research is frequently featured in the national and international press, including MSNBC and the New York Times, and interviews and features on ABC, NBC, and the Discovery channel. Dr. Carney lead the first state supported program to test the effectiveness and safety of cannabidiol for individuals with epilepsy and behavioral problems. His translational research group is studying the disease modifying effects of phytocannabinoids on drug addiction, Alzheimer's disease, autism, and Angelman syndrome, among other disorders.

Barbara J. Coffey, MD, MS

Barbara Coffey, MD, MS, is an internationally known specialist in tics, Tourette's Disorder and related disorders, such as Attention Deficit Hyperactivity Disorder (ADHD) and Obsessive Compulsive Disorder (OCD). Dr. Coffey assumed the position of Chief of the Division of Child and Adolescent Psychiatry and Professor of Psychiatry at the University of Miami Miller School of Medicine October 1, 2017. Until October 1, Dr. Coffey was Chief of the National Tourette Association of America Center of Excellence at Icahn School of Medicine at Mount Sinai (ISMMS) in New York, Professor in the Department of Psychiatry at ISMMS, and until July 1, Research Psychiatrist at the Nathan Kline Institute for Psychiatric Research in Orangeburg, New York. She was also Director of Residency Education in Child and Adolescent Psychiatry and for the Triple Board at ISMMS.

Dr. Coffey received her BA in Biology and Psychology from the University of Rochester, her MD from Tufts University School of Medicine, and her MS in Epidemiology from the Harvard School of Public Health. She completed a residency in general psychiatry at Boston University School of Medicine, and a fellowship in child and adolescent psychiatry at Tufts University School of Medicine.

Dr. Coffey was on the faculty of Harvard Medical School and former Director of Pediatric Psychopharmacology at McLean Hospital and Director of the Tourette's Clinics at McLean and Massachusetts General Hospitals in Boston between 1992-2001, and Director of the Tics and Tourette's Program and Associate Professor at New York University School of Medicine between 2001-2012.

Dr. Coffey is the author of more than 150 manuscripts in peer-reviewed journals, abstracts and book chapters, including *Psychiatric Clinics of North America*, *Journal of the American Academy of Child and Adolescent Psychiatry*, and the *Archives of General Psychiatry*. Co-Chairman of the Medical Advisory Board of the Tourette Association of America, Dr. Coffey is a featured speaker at conferences all over the world. Her research has focused on the clinical course, psychiatric comorbidity, phenomenology, and novel treatments of Tourette's Disorder. Dr. Coffey was regularly listed among the Best Doctors in Boston in the past, and most recently, Best Doctors in New York.

David W. Dodick, MD

David W. Dodick, MD, FRCP(C), FACP, is Professor of Neurology at the Mayo Clinic College of Medicine and a consultant in neurology at the Mayo Clinic, in Scottsdale, Arizona. He is the Director of the Headache Program and the Sport Neurology and Concussion Program at Mayo Clinic in Arizona. He is an Adjunct Professor in the Department of Neurosciences, Norwegian University of Science and Technology. Dr. Dodick is board certified by the Royal College of Physicians and Surgeons of Canada and the American Board of Psychiatry and Neurology (ABPN). He also holds United Council for Neurologic Subspecialties certification in headache medicine and ABPN certification in vascular neurology. Dr. Dodick has authored more than 400 peer-reviewed publications and authored/edited 10 books. He is the Chair of the American Migraine Foundation, American Academy of Neurology (AAN) Annual Program Concussion Committee, Co-Director of the American Registry of Migraine Research, Chair International Registry for Migraine Research, Chair International Headache Society Global Patient Advocacy Coalition, Co-Director of the Annual AAN Sports Concussion Conference, President-Elect of the International Concussion Society, Immediate Past-President of the International Headache Society, former Editor-in-Chief of *Cephalalgia*, and Past-President of the American Headache Society.

C. Neill Epperson, MD

C. Neill Epperson, MD, is the Robert Freedman Endowed Professor and Chairman of the Department of Psychiatry at the University of Colorado School of Medicine (CUSOM). Previously, Dr. Epperson was professor of psychiatry and of obstetrics and gynecology at the Perelman School of Medicine at the University of Pennsylvania, in Philadelphia, where she was also the founder and director of the Penn Center for Women's Behavioral Wellness and of Penn PROMOTES Research on Sex and Gender in Health. Dr. Epperson received her medical degree at The University of North Carolina at Chapel Hill and completed her postdoctoral and research training in psychiatry at Yale University School of Medicine, New Haven, Connecticut, where she rose to the level of associate professor before joining the faculty at the University of Pennsylvania.

Dr. Epperson is internationally recognized for her unique clinical and research expertise in women's reproductive behavioral health across the lifespan. Her work in sex differences related to early life stress and its impact on risk for affective disorders during periods of hormonal change has been funded by the NIMH and the Office of Research on Women's Health. This body of work has led to a greater appreciation of the impact of childhood adversity on physiologic responses to hormonal changes across the female lifespan. Dr. Epperson's research has been consistently funded by the National Institutes of Health for more than 2 decades. She is a productive mentor and independent investigator with more than 200 peer-reviewed publications and presentations.

Mark A. Frye, MD

Dr. Frye is chair of the Department of Psychiatry and Psychology at Mayo Clinic. Dr. Frye also serves as director of the Mayo Clinic Depression Center. He joined the staff of Mayo Clinic in 2006 and holds the academic rank of professor of psychiatry, Mayo Clinic College of Medicine and Science. He is recognized with the distinction of the Stephen and Shelley Jackson Family Professorship in Individualized Medicine. Dr. Frye received his medical degree from the University of Minnesota School of Medicine and completed his psychiatric training at the UCLA Neuropsychiatric Institute. He subsequently completed a research fellowship in the Biological Psychiatry Branch at the National Institute of Mental Health in Bethesda, Maryland. While at NIMH, his research focused on the neurobiology of depression and bipolar disorder. Dr. Frye's current research centers on genomics, brain imaging and neuroendocrinology of mood disorders and alcoholism, complementing his clinical interests in bipolar disorder, depression and alcoholism. Dr. Frye and his team established the Mayo Clinic Individualized Medicine Biobank for Bipolar Disorder in an effort to identify and understand the underpinning mechanisms of bipolar

11TH ANNUAL CHAIR SUMMIT



Master Class for Neuroscience Professional Development

disorders through genomic studies. He receives research support from the National Institute of Mental Health, Mayo Clinic's Samuel C. Johnson Genomics of Addiction Program, SC Johnson Giving, Inc., and Mayo Clinic Center for Individualized Medicine. He has also received funding from the National Institute on Alcohol Abuse and Alcoholism. He is frequently invited to give presentations on his research both nationally and internationally. Dr. Frye serves on the editorial boards of *International Journal of Bipolar Disorders* and *World Journal of Psychiatry* and as scientific reviewer for the Interventions Committee for Adult Disorders, National Institute of Mental Health. He also serves on the Scientific Advisory Committee to the Depression and Bipolar Support Alliance. He is an active author, publishing numerous papers in peer-reviewed publications as well as book chapters and abstracts. In addition to his clinical and research activities, Dr. Frye is active in education. He holds full master's faculty privileges in Clinical and Translational Science at Mayo Clinic Graduate School of Biomedical Sciences and has provided mentorship to many residents, research fellows and assistant professors. Dr. Frye has received multiple honors and awards both as an educator and researcher, including the Mogens Schou Award for Education from the International Society for Bipolar Disorder, two Mayo Clinic Rome Mentorship Awards and the Gerald Klerman Senior Investigator Award from the Depression and Bipolar Support Alliance.

Mark S. Gold, MD

Dr. Mark S. Gold is a teacher of the year, translational researcher, author, mentor and inventor best known for his work on the brain systems underlying the effects of opiate drugs, cocaine and food. He has worked as an Advisor to many White House Drug Czars, White House's, NIDA and NIMH Directors over his 40+ year career. He is an author and inventor who has published over 1000 peer reviewed scientific articles, texts, and practice guidelines. This pioneering work started with detoxification studies using clonidine and lofexidine as a non-opiate detox followed by oral Naltrexone at Yale in the late 70s and continued at the University of Florida. Dr. Gold has translated opioid studies using mouse, rat, non-human primate models before developing his opioid withdrawal hypothesis with his Yale colleagues. He then, led the first studies to demonstrate non-opioid treatment efficacy for alpha-2 agonists. He also led rapid detoxification and clonidine to naltrexone studies in the late 70s and early 80s. Dr. Gold, trying to find patients who would take oral Naltrexone, began his studies of Impaired Health Professionals and employees in health and safety occupations. Dr. Gold has been awarded a number of national awards for his research including the Lifetime Achievement Award of the National Association of Addiction Treatment Professionals, Foundations Fund Prize (APA), PRIDE Lifetime Achievement Award, DEA 30 Years of Service Pin, the McGovern Award for Lifetime Achievement (ASAM-ABAM 2015), National Leadership Award (NAATP), DARE Lifetime Achievement Award, Public Relations Society's Silver Anvil Award, and China Academy of Sciences and DARE awards for his career in research and prevention (2015). More recently, he received the PATH Foundation's Lifetime Achievement Award (2016) as one of the "father's" of addiction medicine presented to him by President Obama's White House Drug Czar Michael Botticelli. He was awarded Distinguished Alumni Awards at Yale University, University of Florida, and Washington University in St Louis and the Wall of Fame at the U.F. College of Medicine.

Dr. Gold was a Professor, Eminent Scholar, Distinguished Professor, Distinguished Alumni Professor, Chairman, Emeritus Eminent Scholar during his 25 years at the University of Florida. His work is widely cited by his peers. It includes citation classics in cocaine neurobiology, opioid addiction neurobiology and treatment, food and process addictions. He proved cocaine was misclassified as safe or the champagne of drugs leading to revision in the DSM 3 and diagnosis of addiction. He has been called a groundbreaking researcher, father of medication assisted recovery, the first to translate rat experiments into theory and treatments for human addicts, mentor of the next generation of addiction researchers and clinicians. Working closely with Bart Hoebel at Princeton University, Gold helped develop the food addiction theory he posited in the 80s. With Nicole Avena, he worked on sugar self administration models for hedonic overeating and developed new treatments for overeating and obesity. Kelly Brownell and Gold's Oxford University Press's Food Addiction has been widely recognized as ground-breaking. While working on food and drug-like reinforcement systems has been an important part of his work for 30 years, he has also worked on dual disorders, Anorexia and Bulimia Nervosa. Dr. Gold worked closely with Al Rhoton and Bill Luttge to establish the UF Brain Institute. He was an original member of the McKnight Brain Institute and Director working to develop programs in Psychiatry, Addiction, Neurology and Neurosurgery. Since his retirement as a Director of the McKnight Brain Institute, Chairman, Distinguished Professor, and a full-time academic in 2014, Dr. Gold has continued his teaching, mentoring, research, and writing. He finished his 5 year State Department grant on opium smokers and the effects of second and third hand opium on children in Afghanistan. He has worked on de novo clinical addiction programs at the Medical College of Georgia, Northwestern, U.F. and Tulane Lakeview Health. Dr. Gold regularly lectures at National & International Meetings, Medical Societies, Grand Rounds around the USA and at international and national scientific meetings on his career, bench-to-bedside science in eating disorders, obesity, and addictions. Recently, he has given a Keynote speech at the National Opioid Summit, Florida Opioid Summit, and for the DEA-DOJ. He speaks regularly at Medical Schools across the USA recently at Yale University, Mayo Clinic, Tulane, Washington University in St Louis, Stanford, U Conn, UCSF, Emory, Harvard-McLean-Borden Cottage and UNC. He has given recent Keynote Addresses at American College of Psychiatrists, CADCA, ASAM, NAATP, APA, and Biological Psychiatry as well as at many States, Medical and Psychiatric Associations dealing with the opioid epidemic. He is an Adjunct

Professor in the Department of Psychiatry at Washington University and an active member of the Clinical Council at the Washington University School of Medicine's Public Health Institute. He has Wash U mentees and works with them regularly. He is the Director of Research for the DEA Educational Association, working closely with DEA and moderating their quarterly educational events broadcast from DEA Headquarters around the world.

Igor Grant, MD, FRCP(C)

Dr. Igor Grant is Distinguished Professor and Chair of Psychiatry and director of the HIV Neurobehavioral Research Program and the Center for Medicinal Cannabis Research at the University of California San Diego. Dr. Grant is a neuropsychiatrist who graduated from the University of British Columbia School of Medicine (1966), and received specialty training in psychiatry at the University of Pennsylvania (1967-1971), and additional training in neurology at the Institute of Neurology (Queen Square) (1980-1981), London, U.K. Dr. Grant's academic interests focus on the effects of various diseases on brain and behavior, with an emphasis on translational studies in HIV, and drugs of abuse. He has contributed to approximately 700 scholarly publications and is principal investigator of several NIH studies, including a NIDA P50 (Translational Methamphetamine AIDS Research Center – TMARC), and is co-director of the HIV Neurobehavioral Research Center (HNRC).

Ned H. Kalin, MD

Ned H. Kalin, MD, is Hedberg Professor and Chairman of the Department of Psychiatry at the University of Wisconsin School of Medicine and Public Health--Madison. His research focuses on uncovering basic mechanisms that relate stress to the development of psychopathology and to understanding the mechanisms that cause some children to be vulnerable for the development of anxiety and depression. He is principal investigator for several ongoing research projects and has published over 200 peer-reviewed journal articles. Dr. Kalin has received considerable recognition for his work including: member of National Academy of Medicine, awarded the Anna-Monika Prize of the European College of Neuropsychopharmacology, inducted as a Distinguished Life Fellow of the American Psychiatric Association, and recently selected as the new Editor-in-Chief of *The American Journal of Psychiatry* (AJP).

John Lauriello, MD

In June 2009, Dr. Lauriello became only the third permanent chair of the University of Missouri Department of Psychiatry in its 50-year history. Dr. Lauriello holds the Robert J. Douglas MD and Betty Douglas Distinguished Faculty Scholar in Psychiatry. Under his leadership he has overseen a major expansion of the department including the opening of the University of Missouri Psychiatric Center; formerly an acute care state facility; it is widely regarded as the psychiatric center of excellence for the Mid Missouri region. Prior to coming to the University of Missouri, Dr. Lauriello was the clinical Vice Chair at the University of New Mexico and Executive Medical Director of the UNM Psychiatric Center. At UNM he directed the Schizophrenia Research Group, which focused on clinical trials and neuroimaging, and served as a UNM site principal investigator for the Mental Illness and Neuroscience Discovery (MIND) Institute, a consortium of universities, schools of medicine, brain research institutions and laboratories in Minnesota, Massachusetts, and New Mexico. Dr. Lauriello remains an active expert and investigator in the area of diagnosis and treatment of schizophrenia. He is an author/co-author of over 100 publications and is a frequent presenter at national meetings. His recent awards include the 2011 Drs. M. Page and Henry Laughlin Alumnus of the Year Award, the highest alumni honor presented by the Temple University School of Medicine, and had been voted one of the Best Doctors in America® from 1998 to 2018. He was elected to the American College of Psychiatrists in 2014, the American Psychiatric Association Distinguished Fellowship in 2018 and is the 2019 Missouri Psychiatric Physicians Association (MPAA) President Elect. A graduate of Yale University in New Haven, Connecticut, Dr. Lauriello completed medical school at Temple University in Philadelphia and residency at New York Presbyterian Hospital's Payne Whitney Psychiatric Clinic. He completed fellowships focused on psychopharmacology and psychobiology at the University of California San Diego and Stanford University.

W. Vaughn McCall, MD, MS

Dr. McCall has been the Case Distinguished University Chair of the Department of Psychiatry and Health Behavior at the Medical College of Georgia (MCG) at Augusta University since 2012. He also serves as Executive Vice Dean of MCG. He completed his medical degree and post-graduate psychiatric training at Duke University. He completed a Masters degree in Epidemiology from Wake Forest University. He is board certified in general psychiatry, geriatric psychiatry, and sleep medicine. His research interests include depression, electroconvulsive therapy, quality of life, insomnia, and suicide. He received 22 years of research support from the National Institute of Mental Health, and he is author of more than 470 publications, including more than 200 peer-reviewed journal articles, with an H-index of 38. He is Editor of the *Journal of ECT*, Past Associate Editor for the *Journal of Clinical Sleep Medicine*, and on the Editorial Board of *Sleep*. He has been the Past President of the Association for Convulsive Therapy, and a prior Director of the Board of the American Academy of Sleep Medicine. He previously was the Chair of Psychiatry and Behavioral Medicine at Wake Forest University School of Medicine from 2001-2012.

Teshamae Monteith, MD, FAHS

Dr. Teshamae Monteith is an Assistant Professor of Clinical Neurology at the University of Miami, Miller School of Medicine. After graduating with a medical degree at the University of Miami, Miller School of Medicine, she completed Neurology residency at New York University and then pursued two fellowships in headache medicine at Thomas Jefferson University and University of California, San Francisco. She is currently the chief of the Headache Division and director of the headache fellowship. Dr. Monteith is a recipient of the American Academy of Neurology's (AAN) Palatucci Advocacy Leadership Award and the American Headache Society's Wolff award. She is a highly regarded lecturer, author of numerous publications, and has served on a number of advisory boards including industry and the American Academy of Neurology's Brain and Life magazine. She conducts a number of clinical trials in headache and has been previously funded by the National Institutes of Health (NIH)/National Institute of Neurological Disorders and Stroke (NINDS) supplements to promote diversity in health-related research for work in migraine, stroke, and imaging biomarkers. Recently, she became a member of the American Academy of Pain Medicine Foundation's workgroup for "Guidelines on Preventive Multidisciplinary Management of Migraine."

David R. Rubinow, MD

Dr. David Rubinow is the Assad Meymandi Professor and Chair of the Department of Psychiatry at the University of North Carolina - Chapel Hill, School of Medicine. Prior to joining UNC, he was the Clinical Director of the National Institute of Mental Health (NIMH) and Chief of the Behavioral Endocrinology Branch. His research interests focus on neurobehavioral effects of gonadal steroids and how genetic variation contributes to differential behavioral response to changes in steroid signaling. Research methods used include administration of hormone super agonists and receptor blockers to manipulate the menstrual cycle and identify the central effects of gonadal steroids in isolation. These studies have demonstrated that, unlike mood disorders accompanying endocrinopathies, reproductive endocrine-related mood disorders represent abnormal responses to normal hormonal signals. Current NIH funded studies include investigations of continuous oral contraceptive administration in menstrual cycle-related mood disorders, estradiol effects on cardiovascular risk and mood dysregulation during the perimenopause, and biomarkers of postpartum depression. Additionally, the UNC Women's Mood Disorders Program, which he directs, has the first and only NIH training fellowship in Women's Mood Disorders. On the basis of his research, he was inducted into the Institute of Medicine of the National Academies in 2012. Dr. Rubinow is also the Director of the UNC Center for Innovation and Health Care System Transformation, which promotes the development of patient-centered innovations designed to address the current challenges facing our nation's health care delivery system.

Stephan J. Sanders, BMBS, PhD

Dr. Sanders trained as a pediatric physician in the UK before pursuing a research career in genomics and bioinformatics. His work has helped characterize the role of de novo mutation in the etiology of Autism Spectrum Disorder (ASD) and identified multiple ASD risk loci including duplications of the 7q11.23 William's Syndrome region (Sanders et al. *Neuron* 2011) and mutations in the sodium channel gene SCN2A (Sanders et al. *Nature* 2012). His work on the integration of CNV and exome data across multiple ASD cohorts recently identified 71 ASD risk loci (Sanders et al. *Neuron* 2015). In addition, he worked as part of a group that integrated spatiotemporal gene expression data from the human brain with these ASD-associated genes (Willsey et al. *Cell* 2013). This approach has implicated deep layer glutamatergic neurons in the frontal cortex during mid-fetal development in the causation of ASD. His lab has three main research focuses: 1) Understanding the genetic basis of childhood neurodevelopmental disorders, in particular ASD; 2) Understanding how these genetic factors lead to the disorders; and 3) Understanding the mechanism of that leads to the male bias in ASD diagnosis, in particular through identifying the biological basis of the female protective effect.

Alan F. Schatzberg, MD

Alan F. Schatzberg received his MD from New York University in 1968. He did his psychiatric residency at the Massachusetts Mental Health Center from 1969-1972 and was Chief Resident, Southard Clinic in 1971-1972. He was also a Clinical Fellow in Psychiatry at Harvard Medical School. After serving in the United States Air Force, he joined the staff at McLean Hospital and the faculty of Harvard Medical School in 1974. At McLean Hospital, he held a number of important positions including Service Chief, Interim Psychiatrist in Chief, Co-Director of the Affective Disorders Program (with Dr. J. Cole) and Director of the Depression Research Facility. In 1988, he became Clinical Director of the Massachusetts Mental Health Center and Professor of Psychiatry at Harvard Medical School but continued at McLean Hospital with his research program on the biology and treatment of depression. In 1991, Dr. Schatzberg moved to Stanford University to become the Kenneth T. Norris, Jr., Professor and Chairman of the Department of Psychiatry and Behavioral Sciences. He served as Chair of the Department there until 2010 and now directs the Stanford Mood Disorders Center.

Dr. Schatzberg has been an active investigator in the biology and psychopharmacology of depressive disorders, exploring: norepinephrine systems in depression as a means of subtyping these disorders; the biological mechanisms that underlie the development of delusions in major depression and innovative therapeutic strategies;

and the clinical psychopharmacology of nondelusional depression with a particular interest in chronic depression and pharmacogenetics. He has authored over 700 publications and abstracts, including the Manual of Clinical Psychopharmacology, whose eighth edition appeared in 2015 and which is co-authored by Dr. Charles DeBattista. He also co-edited with Dr. Charles B. Nemeroff the Textbook of Psychopharmacology whose fifth edition is in press. He is Co-Editor-in-Chief of the *Journal of Psychiatric Research* and sits on many other editorial boards as well, including *Journal of Clinical Psychopharmacology*, *Psychoneuroendocrinology*, *Biological Psychiatry*, and others. He is a Past President of the American Psychiatric Association, American College of Neuropsychopharmacology (ACNP) and the Society of Biological Psychiatry (SOBP) and was also the Secretary-General of the International Society of Psychoneuroendocrinology. He has received numerous awards, including: the 1998 Gerald L. Klerman, MD Lifetime Research Award from the NDMDA, the 2001 Gerald L. Klerman, MD Award from Cornell University Medical College, the 2001 Edward A. Strecker, MD Award from the University of Pennsylvania, the 2002 Mood Disorders Research Award from the American College of Psychiatrists, the 2002 American Psychiatric Association Award for Research, the 2005 Distinguished Service in Psychiatry Award from the American College of Psychiatrists, the 2005 Falcone Award from NARSAD, the 2013 Anna Monika Award, the 2014 Kraepelin Gold Medal from the Max Planck Institute of Psychiatry, the 2015 Gold Medal from the SOBP, the 2015 Lifetime Achievement Award of the ISPNE, the 2017 ACNP Julius Axelrod Mentorship Award, etc. In 2003, he was elected into the Institute of Medicine of the National Academy of Sciences (National Academy of Medicine). He has received honorary doctorate degrees from the Pacific Graduate School of Psychology (2008), the Medical University of Vienna (2011), and the Maimonides University, Buenos Aires (2013).

Steven Siegel, MD, PhD

Dr. Siegel is a practicing physician-scientist specializing in the treatment of schizophrenia and psychosis. He comes to USC after 20 years at the University of Pennsylvania, where he had active roles in research, teaching and clinical care. Dr. Siegel received his MD and PhD in Neurobiology at the Mount Sinai School of Medicine in 1996 after completing an undergraduate degree in Neuroscience at Colgate University in 1986. He later completed residency in Psychiatry and a Fellowship in Neuropsychiatry at the University of Pennsylvania before joining the faculty in 2001.

Dr. Siegel has made contributions to understanding the basic neurobiology of schizophrenia, autism, drug abuse and nicotine dependence, as well as making significant contributions in the translation of his research to the bedside. His laboratory uses animal models to evaluate EEG and event related brain activity, combined with behavioral and molecular studies. Additionally, his laboratory has established new methods for the treatment of schizophrenia by inventing long acting biodegradable implants, now under development for clinical application. His work has been supported by federal, state, foundation, and industry sources over the past 20 years. He has published more than 130 manuscripts spanning topics related to drug abuse, basic research in animal models of schizophrenia and autism, as well as clinical aspects of schizophrenia. He is on the editorial board of several leading journals related to psychiatry and neurobiology.

Joel J. Silverman, MD

Dr. Joel J. Silverman is the James A. Shield Jr., MD Professor of Psychiatry and Chair of the Department of Psychiatry at the Medical College of Virginia at VCU in Richmond, Virginia. He has chaired this department since 1984. He received his BA degree from Washington University and his MD degree from University of Kansas Medical School. He completed a straight medicine internship in Chicago and psychiatric residency training at University of Kansas School of Medicine, and was a Senior Resident and Fellow at Medical College of Virginia. He previously was the President of the American Association of Chairs of Departments of Psychiatry, Chair of the Residency Review Committee in Psychiatry of the Accreditation Council of Graduate Medical Education, served on the Board of Regents of the American College of Psychiatrists, and was Chairman of the American Psychiatric Association's Work Group on the Psychiatric Evaluation of Adults. In addition to the many administrative tasks of his current role, he receives yearly teaching awards and has a vigorous clinical practice.

Carlos Singer, MD

Dr. Carlos Singer is Professor of Neurology and Director of the Division of Parkinson's Disease and Movement Disorders of the University of Miami, designated as a Parkinson's Foundation Center of Excellence. He received his medical degree from the Central University of Venezuela in 1972. This was followed by training in Internal Medicine at the University of Pittsburg and in Neurology at the Albert Einstein College of Medicine Affiliated Hospitals. Dr. Singer received additional training in Electromyography and in Movement Disorders at the University of Miami. In 2011, Dr. Singer was the recipient of the Faculty Hero Award by the University of Miami Medical Group for his patient-centered service. He has chaired the working group on "Non-Motor Manifestations of Parkinson Disease" of the Parkinson Study Group from 2006 to 2010 and is currently a member of the Huntington Study Group Nominating Committee as well as the Education Committee of the Pan-American Section of the Movement Disorders Society. He serves in the editorial board of the *Journal of Neurological Sciences* and the *Journal of Clinical Movement Disorders* and is currently co-editing an issue on Parkinson's Disease to be published by the journal "*Clinics in Geriatric Medicine*" (Elsevier Publishers).

Paul Summergrad, MD

Paul Summergrad, MD, is the Dr. Frances S. Arkin professor and chairman of the Department of Psychiatry and professor of medicine at Tufts University School of Medicine and psychiatrist-in-chief at Tufts Medical Center. Dr. Summergrad served as the 141st president of the American Psychiatric Association, and is a past president of the American Association of Chairs of Departments of Psychiatry. Dr. Summergrad previously served as chief of Inpatient Psychiatric Services at Massachusetts General Hospital from 1987-1998 and as associate professor of psychiatry at Harvard Medical School. An international leader in medical psychiatric illness and care, Dr. Summergrad's research focuses on mood disorders, medical-psychiatric illness, and health system design. He has published extensively with over 100 peer review publications, books, book chapters and other communications. He serves on the editorial boards of Academic Psychiatry, Current Psychiatry and Personalized Medicine in Psychiatry and guest edited a special issue of Academic Psychiatry on strategic planning in academic departments of psychiatry. A sought-after speaker, educator and consultant, he has served as a visiting professor and has given invited lectures throughout the United States and internationally. He is a member of the Diagnostic and Statistical Manual 5 Steering Committee of the American Psychiatric Association and the Standing Committee on Nominations of the World Psychiatric Association. He chaired the work group of the APA board of the role of psychiatry in health care reform which commissioned the Milliman report on the total health care costs associated with psychiatric and substance use illness. He is a distinguished fellow of the American Psychiatric Association, and a fellow of the American College of Psychiatrists and a fellow of the American College of Physicians and has received numerous other awards and honors including the Distinguished Faculty Award from Tufts University School of Medicine. Most recently he was elected to Fellowship in the Royal College of Physicians – Edinburgh and was given the Leadership award of the American Association of Chairs of Departments of Psychiatry. Dr. Summergrad earned his medical degree from the School of Medicine at the State University of New York at Buffalo in 1978 where he was elected to Alpha Omega Alpha in his junior year. He completed his training in internal medicine at Boston City Hospital and Boston University School of Medicine and in psychiatry at Massachusetts General Hospital and Harvard Medical School, where he was chief resident and a clinical fellow in psychiatry. He is board certified in both Psychiatry and Internal Medicine.

Daniel Weinberger, MD

Daniel R. Weinberger, MD, became the Director and CEO of the Lieber Institute for Brain Development (LIBD) in the summer of 2011 after leaving the National Institute of Mental Health where he was head of the Genes, Cognition and Psychosis Program. Dr. Weinberger is regarded worldwide as perhaps the preeminent scientist in schizophrenia research, having been at the forefront of scientific investigation of this illness and related disorders for a generation. He attended college at the Johns Hopkins University, medical school at the University of Pennsylvania, and did residencies in psychiatry at Harvard Medical School and in neurology at George Washington University. He is board certified in both psychiatry and neurology. He was instrumental in focusing research on the role of abnormal brain development as a risk factor for schizophrenia. His lab identified the first specific genetic mechanism of risk for schizophrenia, and the first genetic effects that account for variation in specific human cognitive functions and in human temperament. In addition, he and his colleagues developed the first high-fidelity animal model of schizophrenia. In 2003, Science magazine highlighted the genetic research of his lab as the second biggest scientific breakthrough of the year, second to the discovery of the origins of the cosmos. He is the recipient of many honors and awards, including the K.J. Zulch Neuroscience Prize of the Max Planck Society in Germany, the NIH's Directors Award, The William K. Warren Medical Research Institute Award, the Adolf Meyer Prize of the American Psychiatric Association, the Gold Medal Award of the Society of Biological Psychiatry, the Foundation's Fund Prize from the American Psychiatric Association, and the Lieber Prize of the National Alliance for Research on Schizophrenia and Affective Disorders (now the Brain and Behavior Research Foundation). He is past president of the Society of Biological Psychiatry, past president of the American College of Neuropsychopharmacology, and has been elected to the Institute of Medicine of the National Academy of Sciences.

Jon-Kar Zubieta, MD, PhD

Dr. Zubieta is the recently appointed William H. and Edna Stimson Presidential Endowed Chair, Professor and Chair, Department of Psychiatry, Psychiatrist-in-Chief, University Neuropsychiatry Institute, University of Utah Health Sciences Center. Formerly the Phil F. Jenkins Professor and A. Alfred Taubman Senior Scholar, and a Professor in the Departments of Psychiatry and Radiology, the Neurosciences Program, and Research Professor in the Molecular and Behavioral Neuroscience Institute at the University of Michigan. Faculty member at the University of Michigan since 1995, he has completed formal training in the Neurosciences, Psychiatry and Nuclear Medicine. His research focuses on the neurobiological mechanisms underlying motivational mechanisms and the regulation of stress responses. He has applied this work towards the understanding of affective regulation and conditions where physical and emotional stressors play a significant role, most notably pain, mood disorders, substance use disorders and their interfaces. Dr. Zubieta has 20 years of experience in the use of in vivo functional imaging in humans with PET and fMRI for the quantification of metabolism, blood flow, anatomy, and neuroreceptor sites in human subjects, as well as associated measures. Dr. Zubieta is board certified in both Psychiatry and Nuclear Medicine. He has mentored undergraduate students, 14 graduate students, 26 postdoctoral fellows, and over 20 junior faculty, including 12 career development (K, CDA) awards.

Leslie S. Zun, MD, MBA

Leslie S. Zun, MD, MBA is Chairman & Professor, Department of Emergency Medicine with a secondary appointment in the Department of Psychiatry at the Rosalind Franklin University of Medicine and Science/Chicago Medical School in North Chicago, Illinois and attending in the emergency department in the Sinai Health System in Chicago, Illinois. His background includes a medical degree (MD) from Rush Medical College and a business degree (MBA) from Northwestern University's School of Management. He has presented his research and lectured on management and behavioral emergencies topics both nationally and internationally. He is President of the American Association for Emergency Psychiatry and prior board member of American Academy of Emergency Medicine. He is the chief editor of the Behavioral Emergencies for Emergency Physicians textbook and course director for the past eight years for the National Update on Behavioral Emergencies conference.

DISCLOSURE AND CONFLICT OF INTEREST RESOLUTION

All conflicts of interest of any individual(s) in a position to control the content of this CME activity will be identified and resolved prior to this educational activity being provided. Disclosure about provider and faculty relationships, or the lack thereof, will be provided to the learners.

DISCLOSURE DECLARATION

It is the policy of CME Outfitters, LLC, to ensure independence, balance, objectivity, and scientific rigor and integrity in all of their CME/CE activities. Faculty must disclose to the participants any relationships with commercial companies whose products or devices may be mentioned in faculty presentations, or with the commercial supporters of this CME/CE activity. CME Outfitters, LLC, has evaluated, identified, and attempted to resolve any potential conflicts of interest through a rigorous content validation procedure, use of evidence-based data/research, and a multidisciplinary peer review process.

CME Outfitters, LLC and the faculty do not endorse the use of any product outside of the FDA labeled indications. Medical professionals should not utilize the procedures, products, or diagnosis techniques discussed during this activity without evaluation of their patient for contraindications or dangers of use.

Dr. Nemeroff has disclosed that he receives grants/research support from National Institutes of Health (NIH); Stanley Medical Research Institute. He is a consultant for Bracket (Clintara); Fortress Biotech; Intra-Cellular Therapies, Inc.; Janssen Research & Development LLC; Magstim, Inc.; Navitor Pharmaceuticals, Inc.; Sumitomo Dainippon Pharma; Sunovion Pharmaceuticals Inc.; Taisho Pharmaceutical Inc.; Takeda Pharmaceuticals North America, Inc.; TC MSO, Inc.; Xhale, Inc. He is a stock shareholder of AbbVie Inc.; Antares Pharma; BI Gen Holdings, Inc.; Celgene Corporation; Corcept Therapeutics; OPKO Health Inc.; Seattle Genetics, Inc.; TC MSO, Inc.; Trends in Pharma Development, LLC; Xhale, Inc. He serves on the scientific advisory boards of the American Foundation for Suicide Prevention (AFSP); Anxiety Disorders Association of America (ADAA); Bracket (Clintara); Brain & Behavior Research Foundation (BBRF); Laureate Institute for Brain Research, Inc.; Skyland Trail; Xhale, Inc. He serves on the board of directors for the American Foundation for Suicide Prevention (AFSP); Anxiety Disorders Association of America (ADAA); GratitudeAmerica, Inc. He receives income sources or equity of \$10,000 or more from American Psychiatric Publishing; Bracket (Clintara); CME Outfitters, LLC; EMA Wellness; Intra-Cellular Therapies, Inc.; Magstim, Inc.; Takeda Pharmaceuticals North America, Inc.; Xhale, Inc. He holds the following patents: Method and devices for transdermal delivery of lithium (US 6,375,990B1) Method of assessing antidepressant drug therapy via transport inhibition of monoamine neurotransmitters by ex vivo assay (US 7,148,027B2)

Compounds, Compositions, Methods of Synthesis, and Methods of Treatment (CRF Receptor Binding Ligand) (US 8,511,996B2).

Dr. Alvarez has no disclosures to report.

Dr. Carney has no disclosures to report.

Dr. Coffey has disclosed that she receives research support from Neurocrine Biosciences, Inc.; National Institute of Mental Health (NIMH)/University of California San Francisco (UCSF); Teva Pharmaceutical Industries Ltd./Nuvelution Pharma, Inc. She serves on the advisory board for Abide Therapeutics, Inc.; Teva Pharmaceutical Industries Ltd./Nuvelution Pharma, Inc. She receives other financial support from American Academy of Child and Adolescent Psychiatry; Bracket; Cincinnati Children's Hospital; Harvard Medical School /Psychiatry Academy; Nevada Psychiatric Association; Partners Healthcare; Tourette Association of America: Co-Chair, Medical Advisory Board; TAA-CDC Partnership

11TH ANNUAL CHAIR SUMMIT



Master Class for Neuroscience Professional Development

Dr. Dodick has disclosed that he is a consultant for Alder Pharmaceuticals, Inc.; Allergan; Amgen Inc.; Autonomic Technologies Inc.; Biohaven Pharmaceuticals; Dr. Reddy's Laboratories, Inc.; electroCore, LLC; Eli Lilly and Company; eNeura Inc.; Impel NeuroPharma, Inc.; Ipsen Biopharmaceuticals, Inc.; NeuroRelief Ltd.; Novartis Pharmaceuticals Corporation; Satsuma Pharmaceuticals, Inc.; Teva Pharmaceuticals USA; Theranica Bio-Electronics LTD; W. L. Gore & Associates, Inc.; Zosano Pharma Corporation. He is a stock shareholder of Aural Analytics; EPIEN Medical, Inc.; Healint; Mobile Health Management Services, Inc.; Nocira; Ontologics; Theranica Bio-Electronics LTD Patent 17189376.1-1466: vTitle: Botulinum Toxin Dosage Regimen for Chronic Migraine Prophylaxis.

Dr. Epperson has disclosed that she receives grant support from Sage Therapeutics. She is a consultant for Asarina Pharma; Sage Therapeutics. She is a stock shareholder of Abbott; AbbVie Inc.; GlaxoSmithKline; Johnson & Johnson; Merck & Co., Inc.; Pfizer Inc.

Dr. Frye has disclosed that he receives grant support from AssureRX Health Inc.; Mayo Foundation for Medical Education and Research; Myriad Genetics; National Institute on Alcohol Abuse and Alcoholism (NIAAA); National Institute of Mental Health (NIMH); Pfizer Inc. He is a consultant for Actify Neurotherapies; Allergan; Intra-Cellular Therapies, Inc.; Janssen Research & Development, LLC; Mitsubishi Tanabe Pharma America, Inc.; Myriad Genetics; Neuralstem Inc.; Otsuka America Pharmaceutical, Inc.; Sunovion Pharmaceuticals Inc.; Takeda Pharmaceuticals U.S.A., Inc.; Teva Pharmaceuticals. He further discloses that his employer, Mayo Clinic, has a financial interest in AssureRX and OneOme and the technology referenced in this publication/presentation.

Dr. Gold has no disclosures to report.

Dr. Grant has no disclosures to report.

Dr. Kalin has disclosed that he receives grant and research support from National Institutes of Health (NIH), Principal Investigator; National Institute of Mental Health (NIMH), Principal Investigator. He is a consultant for Pritzker Neuropsychiatric Disorders Research Consortium; Skyland Trail Advisory Board; TC MSO, Inc.; American Psychiatric Association; Editorial Services for the American Journal of Psychiatry.

Dr. Lauriello has disclosed that he receives grant support via the University of Missouri from Alkermes. He receives research support for a clinical research site, Florida Atlantic University Grant funded by Otsuka America Pharmaceutical, Inc. He serves on the advisory board for Alkermes. He has disclosed other financial support from Alkermes for Co-authoring an American Society of Psychopharmacology Poster.

Dr. McCall has disclosed that he receives grant and research support from MECTA Corporation; Merck & Co., Inc. He is a consultant for Merck & Co., Inc.; Sage Therapeutics.

Dr. Monteith has disclosed that she is an advisory board member of Sage Therapeutics. She receives other financial support from Sage Therapeutics.

Dr. Sanders has no disclosures to report.

Dr. Schatzberg has disclosed that he receives research support from Janssen Pharmaceuticals, Inc. He is a consultant for Alkermes; Assurex Health, Inc.; Avanir Pharmaceuticals, Inc.; GGG Consulting; Jazz Pharmaceuticals Inc.; McKinsey & Company; Neuronetics, Inc.; Owl Insights; SAGE Therapeutics; Skyland Trail. He is a stock shareholder of Corcept Therapeutics; Xhale, Inc.; Intersect; Madrigal Pharmaceuticals; Seattle Genetics, Inc.; Incyte Corporation; Dermira, Inc.; Assurex Health, Inc.; Owl Insights.

Dr. Siegel has disclosed that he receives grant support from the National Institutes of Health (NIH). He receives research support from Astellas Pharma US, Inc. He serves on the scientific advisory board for Astellas Pharma US, Inc.; Zynerva Pharmaceuticals, Inc.

Dr. Silverman has no disclosures to report.

Dr. Singer has disclosed that he received honoraria from Mitsubishi Tanabe Pharma America; Neurocrine Biosciences, Inc.

Dr. Summergrad has disclosed that he is a consultant for Alkermes; Compass Pathways; Mental Health Data Services, Inc. (MHDS); Temasek; Quartet Health, Inc. He is a stock shareholder of Mental Health Data Services, Inc. (MHDS); Quartet Health, Inc.

Dr. Weinberger has no disclosures to report.

Dr. Zubieta has disclosed that he is a consultant for Alkermes.

Dr. Zun has no disclosures to report.

Howard Bliwise, MD (peer reviewer) has no disclosures to report.

Jan Perez (planning committee) has no disclosures to report.

Kavitha Ramachandran, PhD (planning committee) has no disclosures to report.

Kashemi D. Rorie, PhD (planning committee) has no disclosures to report.

Sharon Tordoff (planning committee) has no disclosures to report.

Disclosures have been obtained from CME Outfitters staff: No disclosures to report.

CHAIR SUMMIT TWITTER GUIDE



Welcome to the 11th Annual Chair Summit and thank you for your interest in participating in the **#Chair2019** Twitter conversation! If you do not have a Twitter account, please begin at step #1. If you already have your account set up, please begin at step #5.

1. Go to www.twitter.com and click “**Sign up for Twitter**”
2. Fill in your information and click “**Create my account**”
3. Once your account is created, Twitter will take you through a quick tutorial to help you get started.
Twitter will prompt you to select people/associations to follow. Please follow CME Outfitters. If you enter search terms such as neurology, psychiatry, CME, Alzheimer’s, etc., Twitter will find people/organizations associated with those terms for you to follow. You can also choose to skip steps for now to speed up the process.
4. After you complete the set-up process, Twitter will direct you to your home screen where you will see a tweet stream along the right side of the screen, and a text box on the left side of the screen that reads “Compose new Tweet...” This text box is where you will enter your tweets.
5. In the search box at the top of the screen, enter: **#Chair2019**
6. You will see the #Chair2019 tweet stream appear. Under “**Results for #Chair2019**” please select “**All**” so that you can view all tweets related to Chair.
7. **Please follow the #Chair2019 tweet stream during the conference**, and reply, retweet, or compose your own tweets using hashtag #Chair2019. You may tweet questions for faculty presenters, comments on the sessions, links to educational resources, thoughts, notes, and more! However please remember to include #Chair2019 at the end of every tweet so that your tweets appear in the conference tweet stream.
8. If you get stuck, or have questions about Twitter during the meeting, you can ask your questions to CMEO’s Social Media Manager, Anna Larkin at the registration desk or email her at alarkin@cmeoutfitters.com.

The purpose of the Twitter feature at Chair Summit is to allow you the opportunity to interact with your peers and the Chairmen LIVE as the conference is happening. CME Outfitters is committed to providing you opportunities to utilize the latest social technological advances so that you can be engaged in the meeting every step of the way, and make the absolute most of your experience with us. So jump right in ... and have fun with it!

#CHAIR2019

[illegible]

NOTES

[illegible]

[illegible]

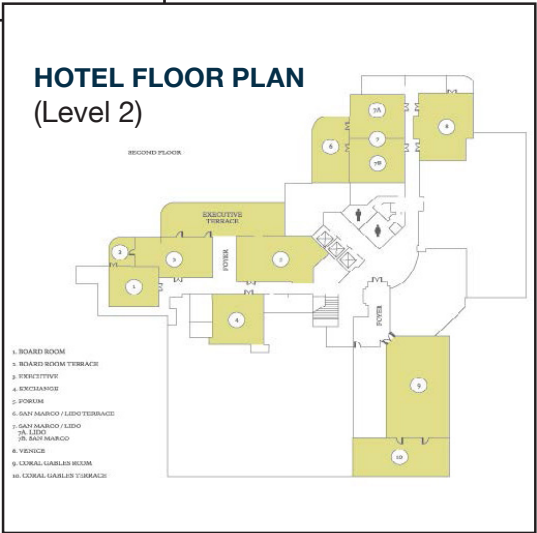
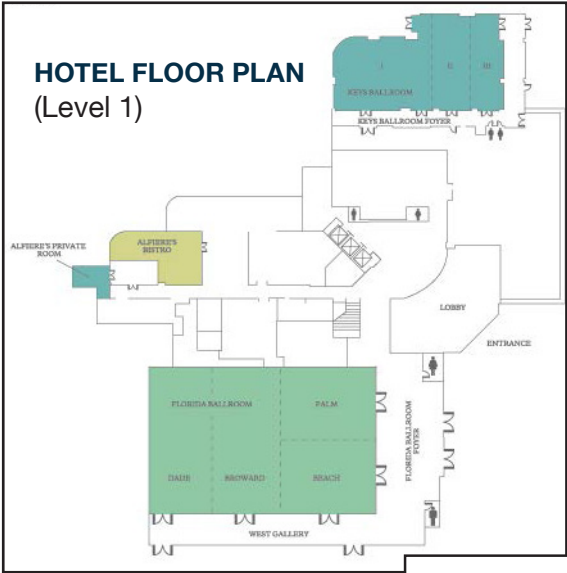
[illegible]

11TH ANNUAL

CME
Outfitter

CHAIR SUMMIT

Master Class for Neuroscience Professional Development



LOCATIONS AT-A-GLANCE

- All Plenary Sessions:** Florida Ballroom (First Floor)
- Wine & Cheese Reception:** Keys Ballroom (First Floor)
- Exhibitors:** Keys Ballroom (First Floor)

Please check the agenda to find the correct location for the Breakout and Chart Review sessions of your choice.

11TH ANNUAL
CHAIR SUMMIT

Master Class for Neuroscience Professional Development

