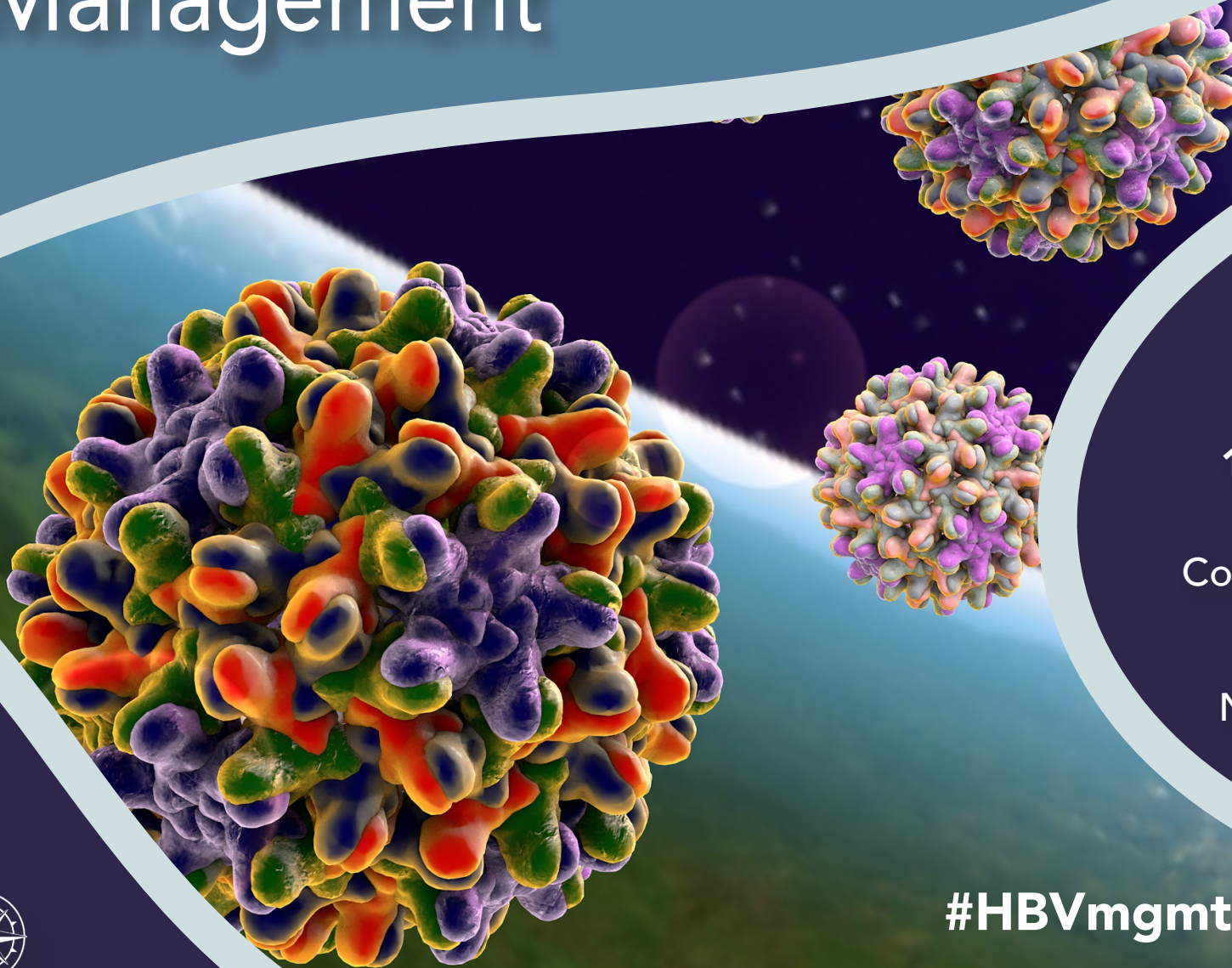


HBV Is Not a Game: Or Is It?

Optimizing Your Approach to HBV Management



April 18

12:00 – 1:15 pm

Ernest Morial
Convention Center

Room 393-396

New Orleans, LA

Provided By



#HBVmgmt

This event is not a part of the official Internal Medicine Meeting 2018 Education Program.



AGENDA

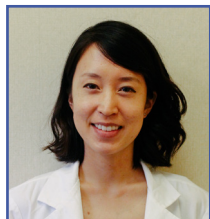
12:00 pm Lunch Begins
12:15 pm Meeting Begins



FACULTY

Joseph Ahn, MD, MS, FAASLD, FACG, AGAF

Associate Professor of Medicine
Director of Clinical Hepatology
Oregon Health & Science University
Portland, OR



Amy Shen Tang, MD

Hepatitis B Program Director
Charles B. Wang Community Health Center
New York, NY

TARGET AUDIENCE

Primary care physicians, internists, physician assistants, nurse practitioners, nurses, and pharmacists who treat patients with HBV.

COMMERCIAL SUPPORT STATEMENT

Supported by an educational grant from Gilead Sciences, Inc.

SYMPOSIUM DETAILS

For more information on this symposium visit www.CMEOutfitters.com/HBVmgmt or scan the QR code on the right.



LEARNING OBJECTIVES

- In at-risk populations, document that appropriate patients have been screened for HBV in alignment with the best practice advice of the new ACP clinical guidelines.
- Initiate antiviral therapy in patients with immune-active chronic hepatitis B (CHB) aligned to AASLD and EASL recommendations.
- Establish regular monitoring protocols for patients with CHB infection to prevent reactivation and surveil for HCC.

The following learning objectives pertain only to those requesting CNE/CPE credit:

- Describe ACP clinical guidelines for screening appropriate at-risk patient populations for HBV and how to properly document.
- Summarize antiviral therapy for patients with immune-active chronic hepatitis B (CHB) aligned to AASLD and EASL recommendations.
- Explain regular monitoring protocols for patients with CHB infection to prevent reactivation and surveil for HCC.

ACCREDITATION STATEMENT

CME Credit (Physicians): CME Outfitters, LLC, is accredited by the Accreditation Council for Continuing Medical Education (ACCME) to provide continuing medical education for physicians.

CME Outfitters, LLC, designates this live activity for a maximum of 1.0 AMA PRA Category 1 Credit™. Physicians should claim only the credit commensurate with the extent of their participation in the activity.

CNE Credit (Nurses): Provider approved by the California Board of Registered Nursing, Provider Number CEP 15510, for 1.0 contact hour.

Note to Nurse Practitioners and Clinical Nurse Specialists: the content of this activity pertains to pharmacology. Earn up to 1.0 contact hour of pharmacotherapy contact hours.

CPE Credit (Pharmacists): CME Outfitters, LLC, is accredited by the Accreditation Council for Pharmacy Education as a provider of continuing pharmacy education. 1.0 contact hour (0.10 CEUs) Universal Activity Number: 0376-0000-18-008-L01-P

ABIM/MOC Credit: Successful completion of this CME activity, which includes participation in the evaluation component, enables the participant to earn up to 1.0 MOC points in the American Board of Internal Medicine's (ABIM) Maintenance of Certification (MOC) program. Participants will earn MOC points equivalent to the amount of CME credits claimed for the activity. It is the CME activity provider's responsibility to submit participant completion information to ACCME for the purpose of granting ABIM MOC credit.



Joseph Ahn, MD, MS, FAASLD, FACG, AGAF

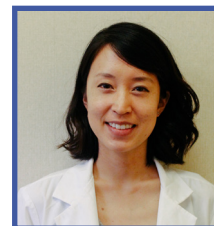
Associate Professor of Medicine
Director of Clinical Hepatology
Oregon Health & Science University
Portland, OR

BIOGRAPHY

Dr. Ahn is a transplant hepatologist with Oregon Health & Science University in Portland, Oregon. He is an Associate Professor of Medicine and serves as the Director of Clinical Hepatology. Prior to joining OHSU, he was the Medical Director of Liver Transplant and Associate Chief of Hepatology at Loyola University in Chicago, Illinois.

Dr. Ahn is Board Certified in Internal Medicine, Gastroenterology, and Transplant Hepatology. He received his medical degree from Northwestern University and completed his residency internal medicine at the University of Chicago. He trained at Northwestern University as a fellow in hepatology and gastroenterology.

As a transplant hepatologist, he treats patients with chronic liver diseases, and liver transplant candidates and recipients. His research interest is focused on hepatitis B, hepatitis C, and liver cancer.



Amy Shen Tang, MD

Hepatitis B Program Director
Charles B. Wang Community Health Center
New York, NY

BIOGRAPHY

Amy Shen Tang, MD is a primary care internist and the Director of Hepatitis B Programs at Charles B. Wang Community Health Center in New York City where she oversees hepatitis B clinical care, research, community outreach and education to reduce hepatitis B transmission and liver complications among patients with chronic hepatitis B. She also serves as the Co-Chair for the National Task Force on Hepatitis B and the Advocacy Chair for the NYC Hep B Coalition where she works with local, regional, and national stakeholders around hepatitis B awareness and linkage to care.

Dr. Tang received her medical degree from the University of California, San Francisco School of Medicine and completed her primary care internal medicine residency at NYU School of Medicine and Bellevue Hospital. She is currently affiliated with NYU Langone and New York-Presbyterian/Weill Cornell.



DISCLOSURE DECLARATION

It is the policy of CME Outfitters, LLC, to ensure independence, balance, objectivity, and scientific rigor and integrity in all of their CE activities. Faculty must disclose to the participants any relationships with commercial companies whose products or devices may be mentioned in faculty presentations, or with the commercial supporter of this CE activity. CME Outfitters, LLC, has evaluated, identified, and attempted to resolve any potential conflicts of interest through a rigorous content validation procedure, use of evidence-based data/research, and a multidisciplinary peer review process. The following information is for participant information only. It is not assumed that these relationships will have a negative impact on the presentations.

Dr. Ahn reports that he is an advisory board member of Gilead.

Dr. Tang has no disclosures to report.

Jeffrey Helfand, DO, MS (peer reviewer) has no disclosures to report.

Mae Ochoa, RPh (peer reviewer) has no disclosures to report.

Kashemi D. Rorie, PhD (planning committee) has no disclosures to report.

Jan Perez (planning committee) has no disclosures to report.

Sharon Tordoff (planning committee) has no disclosures to report.

Disclosures were obtained from the CME Outfitters, LLC staff:
No disclosures to report.

Faculty of this CE activity may include discussions of products or devices that are not currently labeled for use by the FDA. The faculty have been informed of their responsibility to disclose to the audience if they will be discussing off-label or investigational uses (any uses not approved by the FDA) of products or devices.

OBTAINING CREDIT

In order to receive credit, please complete the evaluation/credit request form found on your table and turn them in to the CME Outfitters staff on your way out.

DOWNLOADABLE RESOURCES

Downloadable resources will be available at
www.CMEOutfitters.com/HBVmgmtResources



INSTRUCTIONS FOR INTERACTIVE TECHNOLOGY

If you would like to use your tablet or mobile device to answer polling questions, view the onsite presentations, and submit questions to the faculty, please follow the instructions below:

1. Get Connected

- Please connect to the **CME Outfitters network** with your mobile device or laptop. This network does not have a password.
** Please note that this network is a local network and does NOT mean you're connected to the internet.*
- Once you have joined the network, go to **arraylearn.com**.
- **You are now connected to the symposium.** All content and polling questions can be viewed on your device as long as you are connected to the above listed network.

2. Ask a Question to the Faculty

- Please click on **"Ask a Question"** and type your question. Please include the faculty member's name if the question is specifically for them. Your question will be sent to the faculty for the question and answer portion of the session.

3. View and Take Notes on Presentation Slides

- Please click on the **"Take a Slide Note"** button. If you did not enter your email address when you joined the meeting, you will be required to do so for note taking. When the meeting is complete, all your notes will be emailed to you within 5 business days.

THANK YOU FOR JOINING US TODAY

This symposium will be available as a **web replay beginning May 18, 2018**, please check **www.CMEOutfitters.com** for more information on that date.