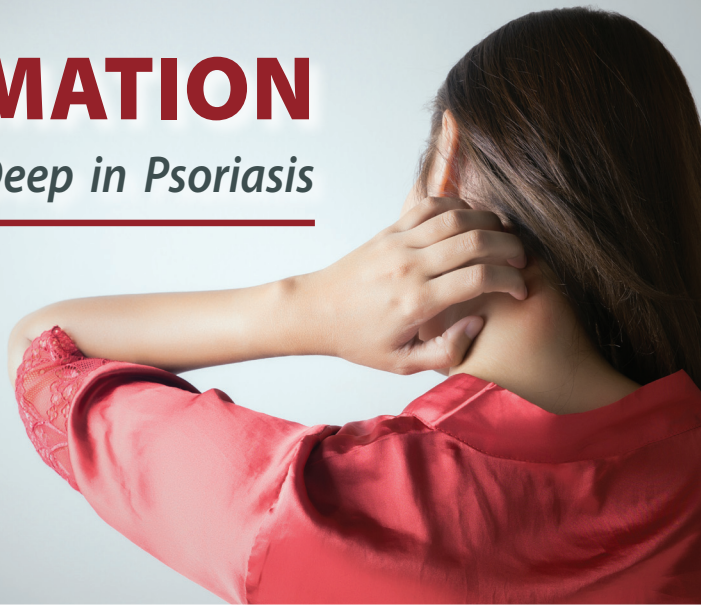
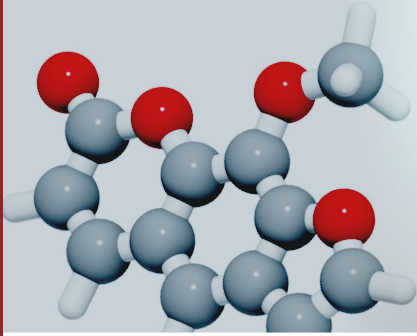


INFLAMMATION

More Than Skin Deep in Psoriasis

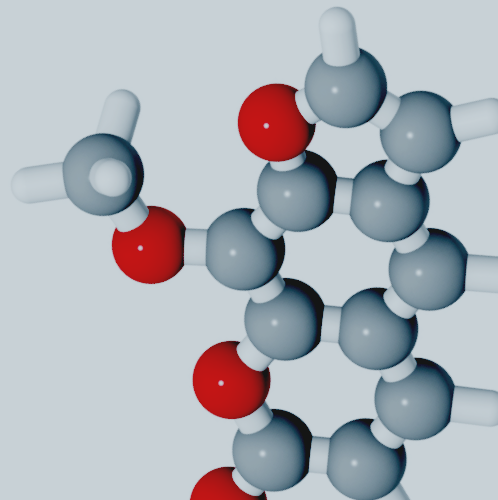


NEW YORK ACADEMY OF MEDICINE | HOSACK HALL | 5:15PM — 6:45PM

NOVEMBER 16TH, 2016

Provided by
CME
Outfitters 

#skinCME



INFLAMMATION

More Than Skin Deep in Psoriasis

INSTRUCTIONS FOR INTERACTIVE TECHNOLOGY

If you would like to use your tablet or mobile device to answer polling questions, view the onsite presentations, and submit questions to the faculty, please follow the instructions below:

1. Get Connected

- Please connect to the **CME Outfitters network** with your mobile device or laptop. This network does not have a password.
** Please note that this network is a local network and does NOT mean you're connected to the internet.*
- Once you have joined the network, go to **arraylearn.com**
- You are now connected to the symposium. All content and polling questions can be viewed on your device as long as you are connected to the above listed network.

2. Ask a Question to the Faculty

- Please click on **"Ask a Question"** and type your question. Please include the faculty member's name if the question is specifically for them. Your question will be sent to the faculty for the question and answer portion of the session.

3. View and Take Notes on Presentation Slides

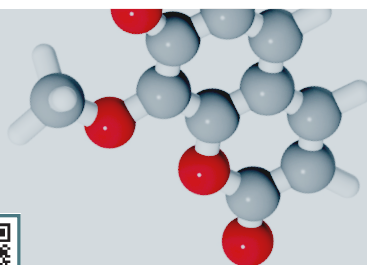
- Please click on the **"Take a Slide Note"** button. If you did not enter your email address when you joined the meeting, you will be required to do so for note taking. When the meeting is complete, all your notes will be emailed to you within 5 business days.

OBTAINING CREDIT

In order to receive credit, please complete the evaluation/test form found on your table and turn them in to the CME Outfitters staff on your way out.

PRESENTATION SLIDES

Downloadable resources will be available at www.CMEOutfitters.com/PSOresources



INFLAMMATION

More Than Skin Deep in Psoriasis

FACULTY

James G. Krueger, MD, PhD (Moderator)

D. Martin Carter Professor in Clinical Investigation; Head of Laboratory for Investigative Dermatology; Co-director, Center for Clinical and Translational Science; The Rockefeller University Hospital
New York, NY

Joel M. Gelfand, MD, MSCE

Professor of Dermatology; Professor of Epidemiology; Vice Chair of Clinical Research and Medical Director; Dermatology Clinical Studies Unit; Director, Psoriasis and Phototherapy Treatment Center; University of Pennsylvania Perelman School of Medicine
Philadelphia, PA

Iain B. McInnes, FRCP, PhD, FRSE

Muirhead Chair of Medicine; Director, Institute of Infection, Immunity and Inflammation
Professor of Experimental Medicine; Director of Research Institute (Immunology); College of Medical, Veterinary and Life Sciences; University of Glasgow
Glasgow, Scotland; United Kingdom

AGENDA

5:15PM – 5:20PM

Introductions and Overview of Systemic Inflammation

5:20PM – 5:35PM

Tissue Heterogeneity

5:35PM – 5:50PM

Clinical Significance in Cardiometabolic Co-morbidity in Psoriatic Disease

5:50PM – 6:05PM

Current Treatment Paradigms of Psoriatic Arthritis

6:05PM – 6:20PM

Current Treatment Paradigms of Moderate-to-Severe Psoriasis

6:20PM – 6:35PM

Translating Pathways to Clinical Cases

6:35PM – 6:45PM

Q&A

This event is neither sponsored by nor endorsed by the Icahn School of Medicine.

#skinCME

INFLAMMATION

More Than Skin Deep in Psoriasis

LEARNING OBJECTIVE

- Recognize the common pathogenic links between psoriasis and PsA to improve assessment and diagnosis in practice.
- Illustrate the role of inflammatory cytokines and cellular mediators in the pathogenesis of psoriasis and CVD.
- Integrate the role of treatment targets/pathways of new agents into treatment decisions for patients with psoriasis and PsA.

The following learning objectives pertain only to those requesting CNE credit:

- Identify ways to integrate the role of treatment targets/pathways of new agents into treatment decisions for patients with psoriasis and PsA.

TARGET AUDIENCE

Dermatologists, health care providers, and scientists involved in the optimal care of patients with psoriasis and psoriatic arthritis.

COMMERCIAL SUPPORTER STATEMENT

This activity is supported by an educational grant from Lilly. For further information concerning Lilly grant funding visit www.lillygrantoffice.com.



For more information about this no fee symposium visit www.CMEOutfitters.com/psoriasisNY


ACCREDITATION STATEMENTS

CME Credit: CME Outfitters, LLC, is accredited by the Accreditation Council for Continuing Medical Education (ACCME) to provide continuing medical education for physicians.

CME Outfitters, LLC, designates this live activity for a maximum of 1.5 *AMA PRA Category 1 Credits™*. Physicians should claim only the credit commensurate with the extent of their participation in the activity.

CNE Credit: Provider approved by the California Board of Registered Nursing, Provider Number CEP 15510, for 1.5 contact hours.

Note to Nurse Practitioners and Clinical Nurse Specialists: the content of this activity pertains to pharmacology. Earn up to 1.5 contact hours of pharmacotherapeutic contact hours.

CPE Credit: CME Outfitters, LLC, is accredited by  the Accreditation Council for Pharmacy Education as a provider of continuing pharmacy education. 1.5 contact hours (0.15 CEUs)

Universal Activity Number:
0376-0000-16-029-L01-P

Type: knowledge-based

INFLAMMATION

More Than Skin Deep in Psoriasis



James G. Krueger, MD, PhD (Moderator)

The Rockefeller University Hospital
New York, NY

Biography

Dr. Krueger is Head of the Laboratory for Investigative Dermatology at the Rockefeller University. He also serves as a Physician, Co-director, Center for Clinical and Translational Science at the Rockefeller University Hospital, and Chief

Executive Officer of the Rockefeller University Hospital in New York City.

Dr. Krueger earned his bachelor's degree from Princeton University and a PhD in virology and cell biology from the Rockefeller University. He received an MD from Cornell University Medical College, where he also completed an internship in internal medicine and residency in dermatology. Dr. Krueger is certified by the American Board of Dermatology.

His research group at Rockefeller was the first to conduct clinical trials with specific, targeted immune antagonists in psoriasis and this work established that elimination of pathogenic T-cells from skin lesions could reverse the full pathological phenotype of psoriasis. Since then his group has used immune-based therapeutics to dissect inflammatory pathways in psoriasis and to conduct parallel pharmacogenomic studies that define mechanisms of targeted therapeutics in human populations. A more recent focus has been definition of new inflammatory pathways, as well as new types of inflammatory cells in psoriasis lesions that are now being targeted with new biologic drugs. He has been an advocate of bidirectional translational research (bench to bedside and back) in humans using psoriasis as a model inflammatory disease to dissect pathogenic pathways that cannot be studied in animal models.

INFLAMMATION

More Than Skin Deep in Psoriasis



Joel M. Gelfand, MD, MSCE

University of Pennsylvania Perelman
School of Medicine
Philadelphia, PA

Biography

Joel M. Gelfand MD MSCE is Professor of Dermatology and Epidemiology (with tenure) at the University of Pennsylvania's Perelman School of Medicine. He is also Vice Chair of Clinical Research and Medical Director

of the Dermatology Clinical Duties Unit, Director of the Psoriasis and Phototherapy Treatment Center, and Founding Director, of the Patient Centered Outcomes Research concentration in PENN's graduate epidemiology master degree program. He is principal investigator of three large NIH funded psoriasis projects: The Dermatology Clinical Effectiveness Research Network (DCERN) which evaluates the effectiveness of psoriasis treatments under real world conditions, the Incident Health Outcomes and Psoriasis Events (iHOPE) study which is a population based prospective study of 9000 psoriasis patients and 90,000 controls nested within an electronic medical records system in the United Kingdom in which general practitioners have provided specific information about psoriasis history and body surface area affected, and the Vascular Inflammation in Psoriasis Trials (VIP) which are multi-center interventional trials evaluating the impact of an adalimumab, secukinumab, ustekinumab, phototherapy, and placebo on vascular inflammation and lipid metabolism. He is a nationally and internationally recognized expert in psoriasis, clinical epidemiology, drug safety, and clinical trials. Dr. Gelfand is the author of over 100 scientific publications (cited over 11000 times, H index 46) which appear in journals such as JAMA, BMJ, European Heart Journal, Annals of Rheumatic Disease, JAMA Dermatology, JAAD, and the JID. He is the recipient of the American Skin Association's Psoriasis Achievement Award, PENN's Marjorie Bowman Award, Penn's Department of Biostatistics and Epidemiology's epidemiology teaching award (2015) and is an elected member of the American Society for Clinical Investigation. He has given over 10 named lectureships and keynote addresses including the Society for Investigative Dermatology's Eugene M. Farber lecture. He has received grant support from NIH (F32, K23, RC1, 3 R01's, K24), FDA (R01), the Dermatology Foundation, the American Skin Association, the National Psoriasis Foundation, and numerous pharmaceutical companies to support his independent research program. The overarching goal of his research and clinical practice is to improve psoriasis patient outcomes in the skin and joints, while lowering the risk of diabetes, CV disease and mortality.

INFLAMMATION

More Than Skin Deep in Psoriasis



Iain B. McInnes, FRCP, PhD, FRSE

University of Glasgow
Glasgow, Scotland
United Kingdom

Biography

Dr. McInnes is the Director of the Institute of Infection Immunity and Inflammation. Extensive experience in leading multi-centre programmes nationally and internationally. He is Director of the Scottish MRC Clinical

Pharmacology and Pathology Clinical PhD Training Programme, Chief investigator for the Scottish Early RA Cohort (SERA) and the related SMS-IC biomarker discovery programme, PROMISERA, and Chief investigator of numerous global phase II and III clinical trials of novel immune therapies. He has served as member or chair of numerous national grant-funding panels and as Chair of several EULAR Scientific Committees. He is immediate past chairman of the Forum (Foundation for European Rheumatology Research) Scientific Committee, leads the European Roadmap programme that is defining the research agenda for rheumatology for the next decade and has just been elected Treasurer of EULAR. He was elected a Fellow of the Royal Society of Edinburgh in 2008 and the Academy of Medical Sciences in 2012.

INFLAMMATION

More Than Skin Deep in Psoriasis

DISCLOSURE DECLARATION

It is the policy of CME Outfitters, LLC, to ensure independence, balance, objectivity, and scientific rigor and integrity in all of their CME/CE activities. Faculty must disclose to the participants any relationships with commercial companies whose products or devices may be mentioned in faculty presentations, or with the commercial supporter of this CME/CE activity. CME Outfitters, LLC, has evaluated, identified, and attempted to resolve any potential conflicts of interest through a rigorous content validation procedure, use of evidence-based data/research, and a multidisciplinary peer review process. The following information is for participant information only. It is not assumed that these relationships will have a negative impact on the presentations.

Dr. Krueger has disclosed that he has received research and grant support from Amgen Inc.; Boehringer Ingelheim; Bristol-Myers Squibb Company; Dermira, Inc.; Innovaderm Research Inc.; Janssen Pharmaceuticals, Inc.; Kadmon Corporation, LLC; Kyowa Hakko Kirin Co., Ltd.; LEO Pharma Inc.; Novartis; PAREXEL International Corporation; Pfizer Inc.; Regeneron Pharmaceuticals, Inc.; and Vitae Pharmaceuticals, Inc. He serves as a consultant for AbbVie Inc.; Baxter; Biogen Idec; Boehringer Ingelheim; Bristol-Myers Squibb Company; Dermira, Inc.; Janssen Pharmaceuticals, Inc.; Kadman Corporation, LLC; Kineta, Inc.; Eli Lilly and Company, Merck & Co., Inc.; Novartis; Pfizer Inc.; sanofi-aventis U.S. LLC; EMD Serono, Inc.; and XenoPort, Inc.

Dr. Gelfand has disclosed that he has received research and grant support from AbbVie Inc.; Amgen Inc.; Eli Lilly and Company; Janssen Biologics, Inc. (formerly Centocor Biotech, Inc.); Novartis Corporation; Pfizer Inc.; Regeneron Pharmaceuticals, Inc; and Sanofi. He serves as a consultant for AbbVie Inc.; Amgen Inc.; AstraZeneca; Celgene Corporation; Coherus Biosciences; Eli Lilly and Company; Janssen Biologics, Inc. (formerly Centocor Biotech, Inc.); Merck & Co., Inc.; Novartis Pharmaceuticals Corporation; Pfizer Inc.; Sanofi; and Valeant.

Dr. McInnes has disclosed that he has received research and grant support from Arthritis Research UK (ARUK) Centre of Excellence; Celgene Corporation; and UCB, Inc.. He serves as a consultant for AbbVie Inc.; AstraZeneca; Bristol-Myers Squibb Company; Celgene Corporation; Eli Lilly and Company; Janssen Pharmaceuticals, Inc.; Novartis; Pfizer, Inc.; and UCB, Inc.

Jeffrey Helfand, DO, MS (peer reviewer) has nothing to disclose.

Kimberley Murray, RN, MS (peer reviewer) has nothing to disclose.

Sharon Tordoff, CHCP (planning committee) has nothing to disclose.

Jan Perez, CHCP (planning committee) has nothing to disclose.

Disclosures were obtained from the CME Outfitters, LLC staff: Nothing to disclose.

CME Outfitters, LLC, the faculty, and Lilly do not endorse the use of any product outside of the FDA labeled indications. Medical professionals should not utilize the procedures, products, or diagnosis techniques discussed during this activity without evaluation of their patient for contraindications or dangers of use.

INFLAMMATION

More Than Skin Deep in Psoriasis

This event is neither sponsored by nor endorsed by the Icahn School of Medicine.

#skinCME